



# Waldo Road Job Center Proposal

Board of County Commissioners

June 14, 2016

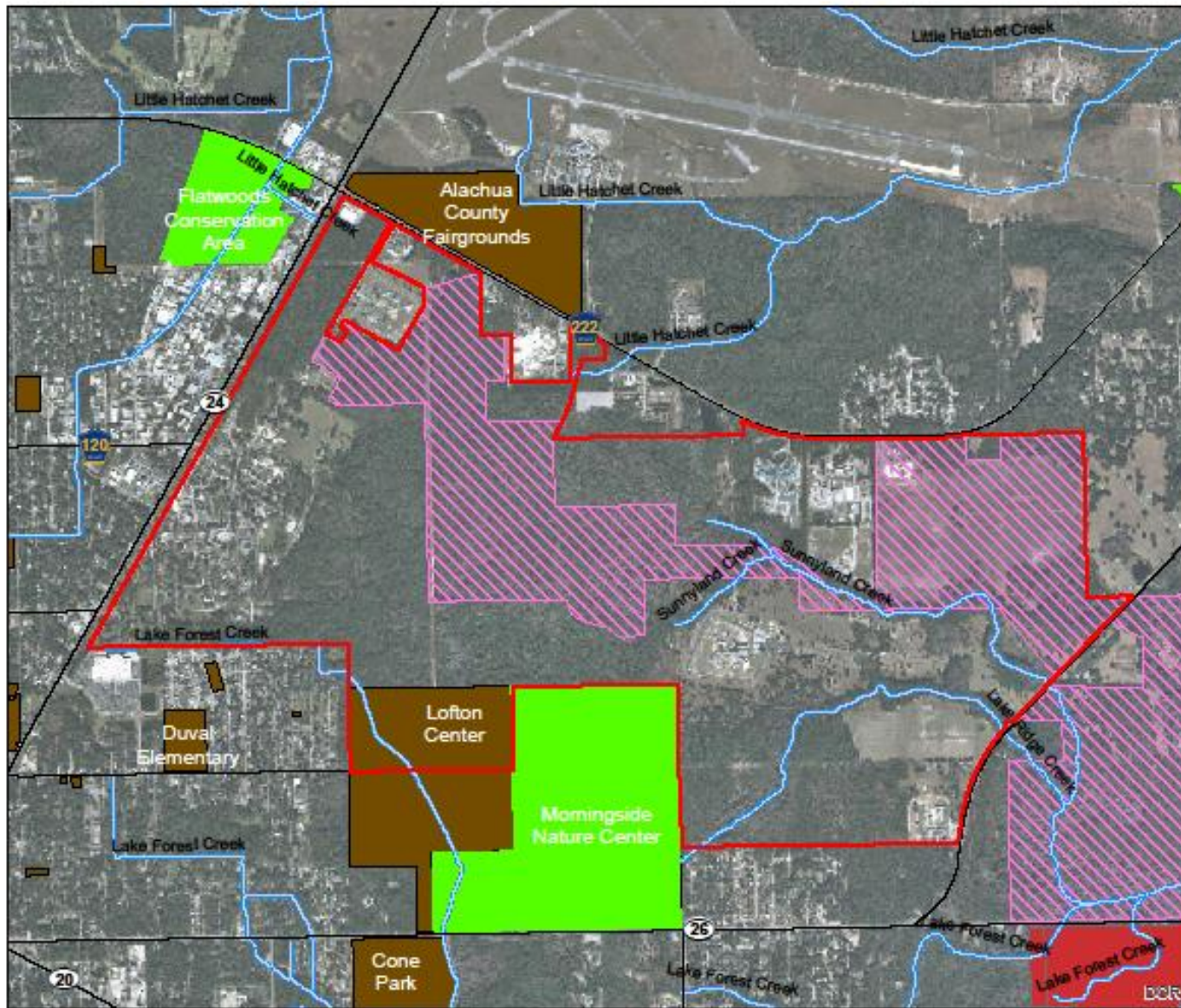


## Existing Conservation, Parks, Schools, etc.

- Project Area (2,652 acres)
- Gainesville Creeks
- Newnans Lake State Forest
- Other Public Conservation Lands
- Conservation Easements
- Parks, Schools, etc.



0 0.25 0.5 Miles



DISCLAIMER: This map and the spatial data it contains are made available as a public service, to be used for reference purposes only. The Alachua County Environmental Protection Department provides this information AS IS without warranty of any kind, implied or expressed, regarding accuracy, completeness, or fitness of use. The quality of the data is dependent on the various sources from which each data layer is obtained.

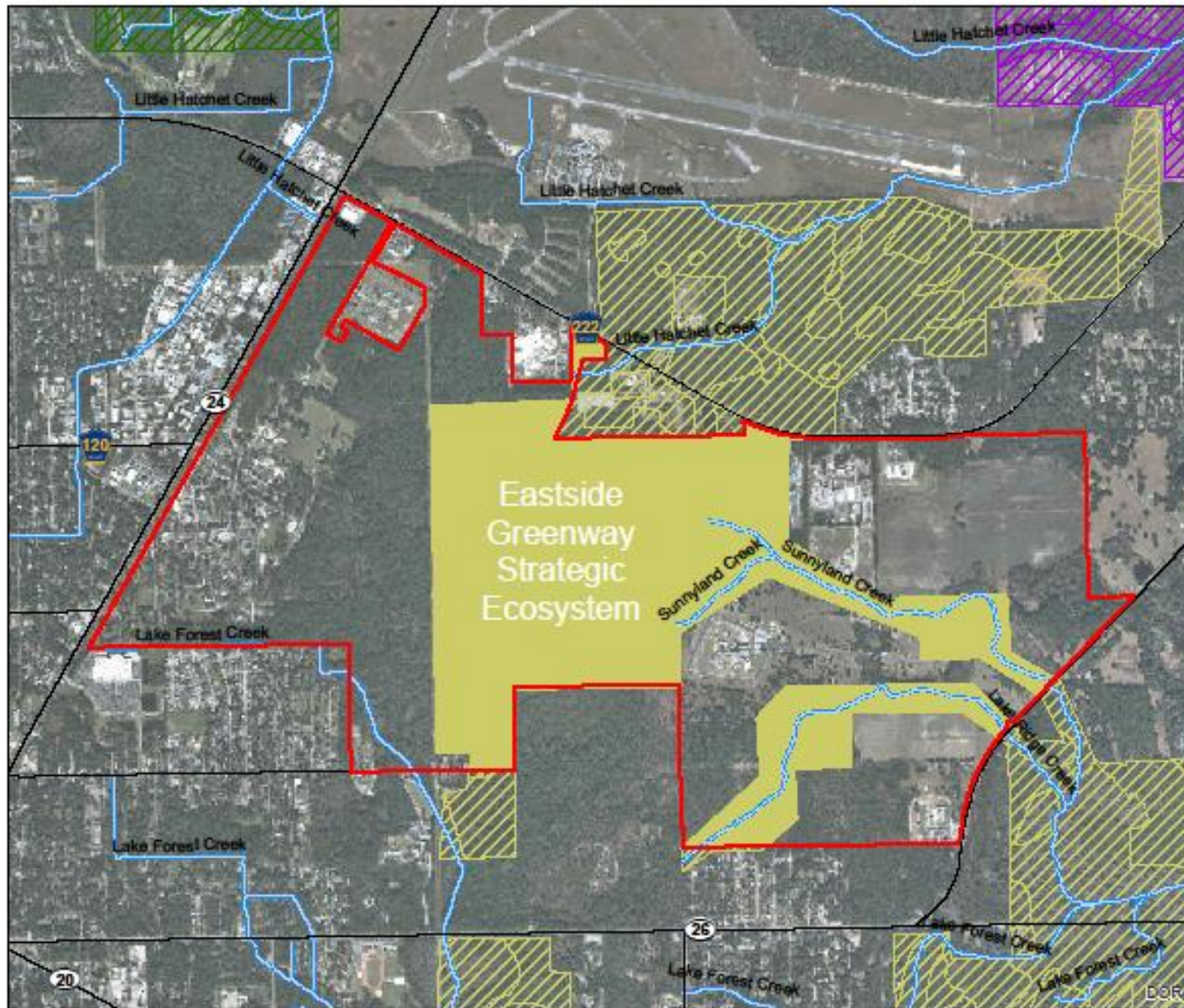


## Strategic Ecosystems

- Project Area (2,652 acres)
- Gainesville Creeks

### Strategic Ecosystems

- East Side Greenway
- Buck Bay Flatwoods
- Gum Root Swamp
- Strategic Ecosystem in Project Area (706 acres)






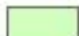
0 0.25 0.5 Miles

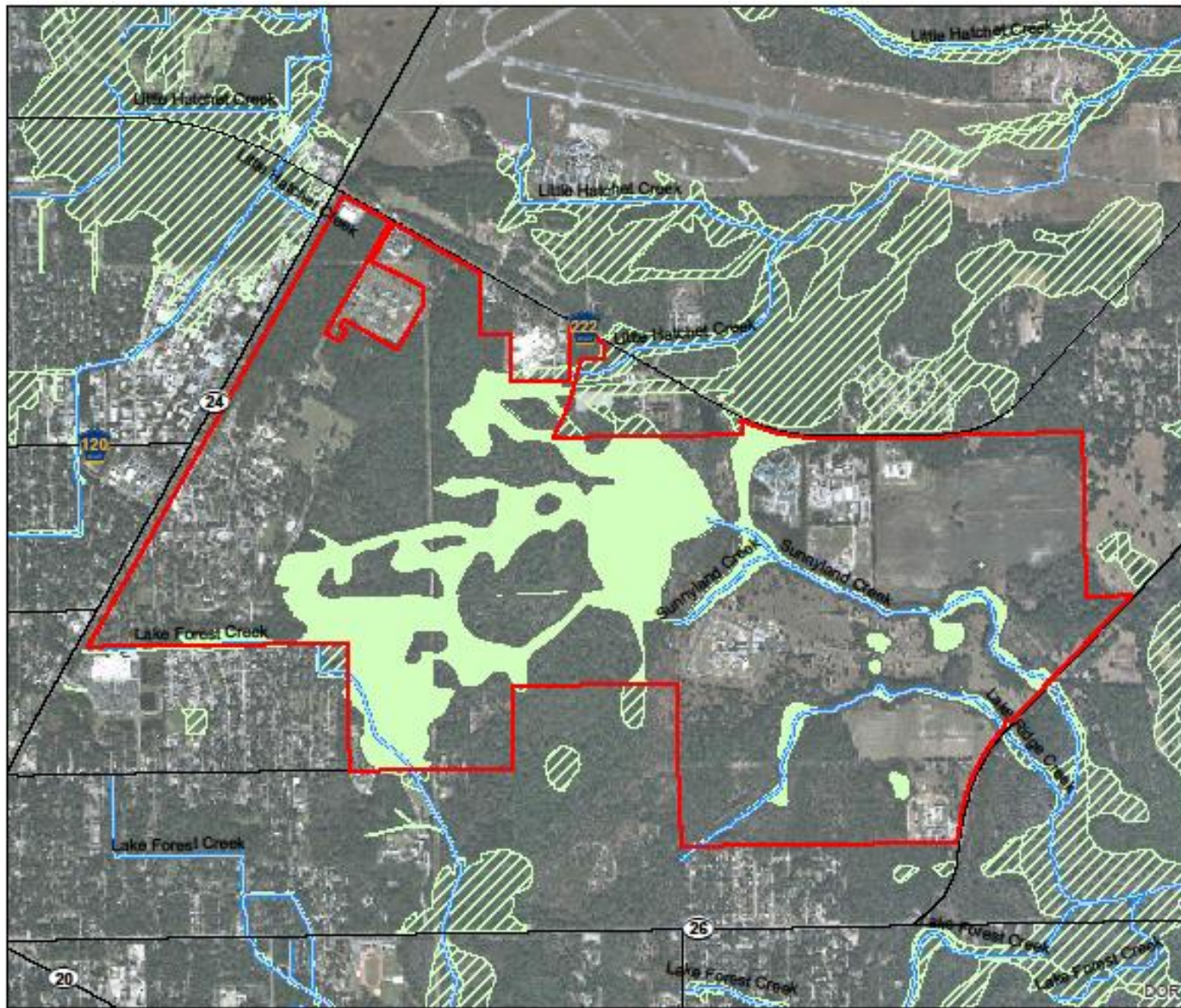
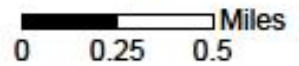


DISCLAIMER: This map and the spatial data it contains are made available as a public service, to be used for reference purposes only. The Alachua County Environmental Protection Department provides this information AS IS without warranty of any kind, implied or expressed, regarding accuracy, completeness, or fitness of use. The quality of the data is dependent on the various sources from which each data layer is obtained.



## FEMA FLOOD HAZARD AREA





-  Project Area (2,652 acres)
-  Gainesville Creeks
-  FEMA Flood Zones
-  FEMA Flood Zones in Project Area (462 acres)



DISCLAIMER: This map and the spatial data it contains are made available as a public service, to be used for reference purposes only. The Alachua County Environmental Protection Department provides this information AS IS without warranty of any kind, implied or expressed, regarding accuracy, completeness, or fitness of use. The quality of the data is dependent on the various sources from which each data layer is obtained.

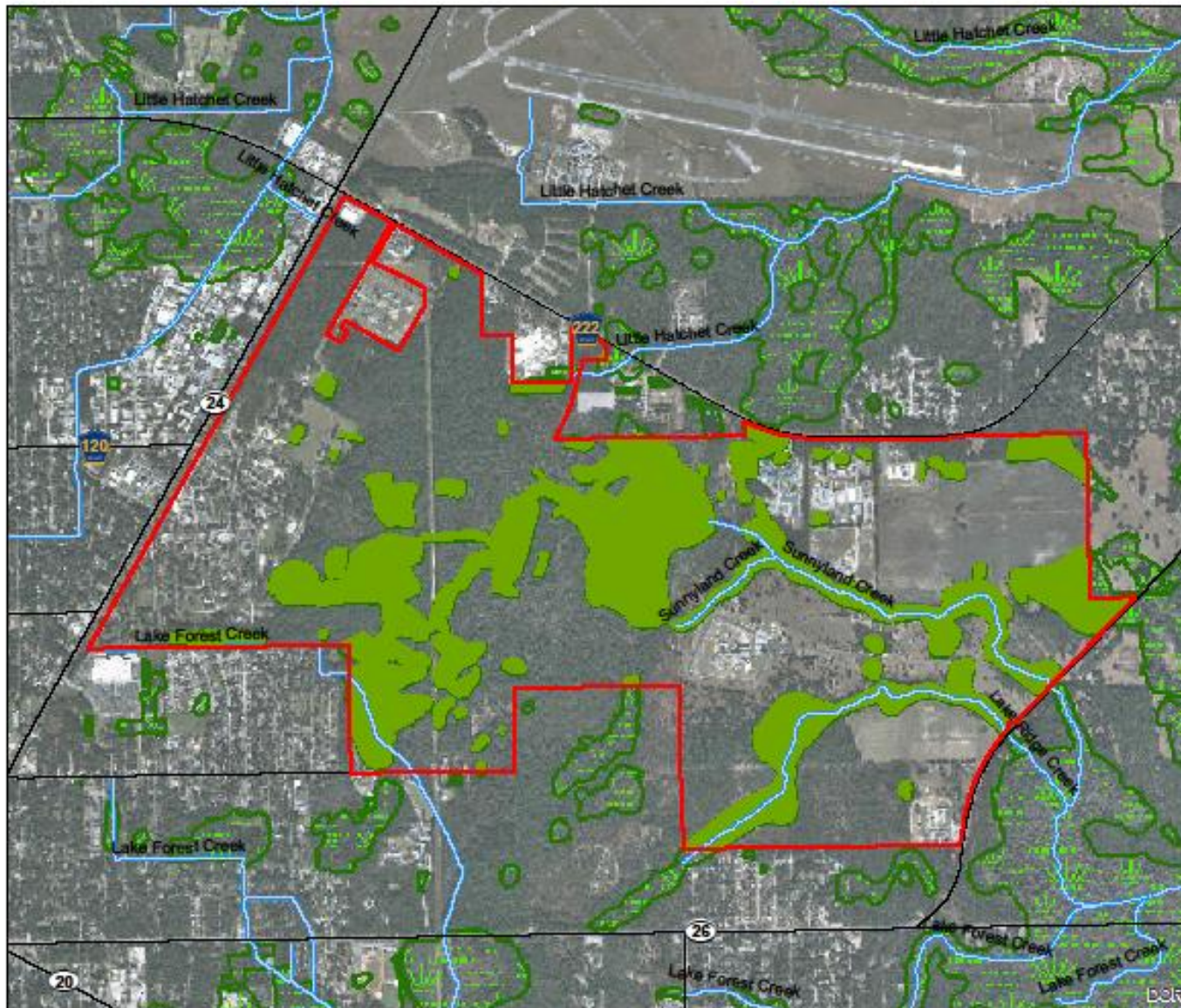


## COMPOSITE WETLANDS

-  Project Area (2,652 acres)
-  Gainesville Creeks
-  Composite Wetlands
-  Composite Wetlands in Project Area (464 acres)






0 0.25 0.5 Miles

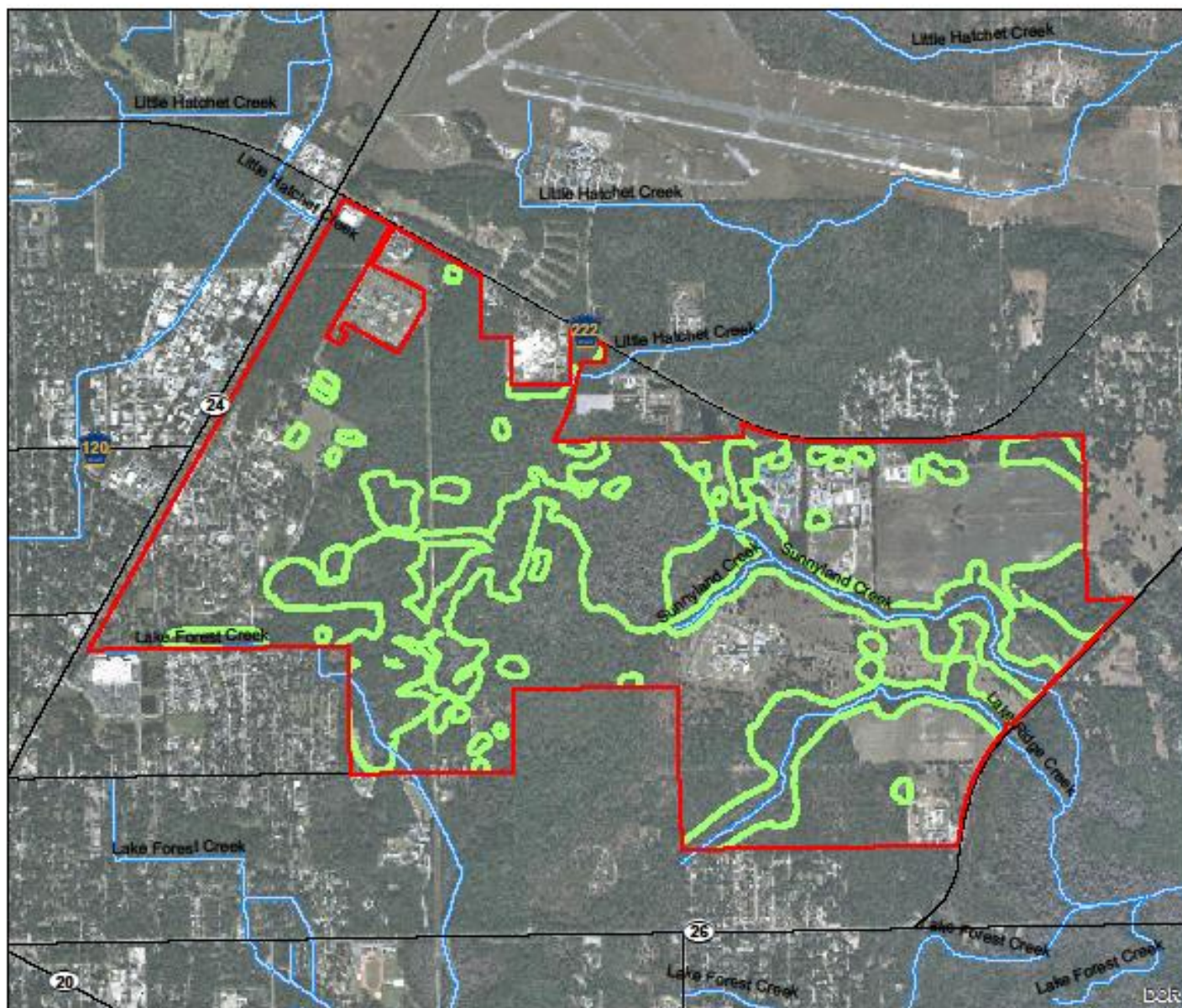


**DISCLAIMER:** This map and the spatial data it contains are made available as a public service, to be used for reference purposes only. The Alachua County Environmental Protection Department provides this information AS IS without warranty of any kind, implied or expressed, regarding accuracy, completeness, or fitness of use. The quality of the data is dependent on the various sources from which each data layer is obtained.



## 75 Foot Buffer of Composite Wetlands

-  Project Area (2,652 acres)
-  Gainesville Creeks
-  Composite Wetlands 75 Foot Buffer (208 acres)



0 0.25 0.5 Miles



DISCLAIMER: This map and the spatial data it contains are made available as a public service, to be used for reference purposes only. The Alachua County Environmental Protection Department provides this information AS IS without warranty of any kind, implied or expressed, regarding accuracy, completeness, or fitness of use. The quality of the data is dependent on the various sources from which each data layer is obtained.



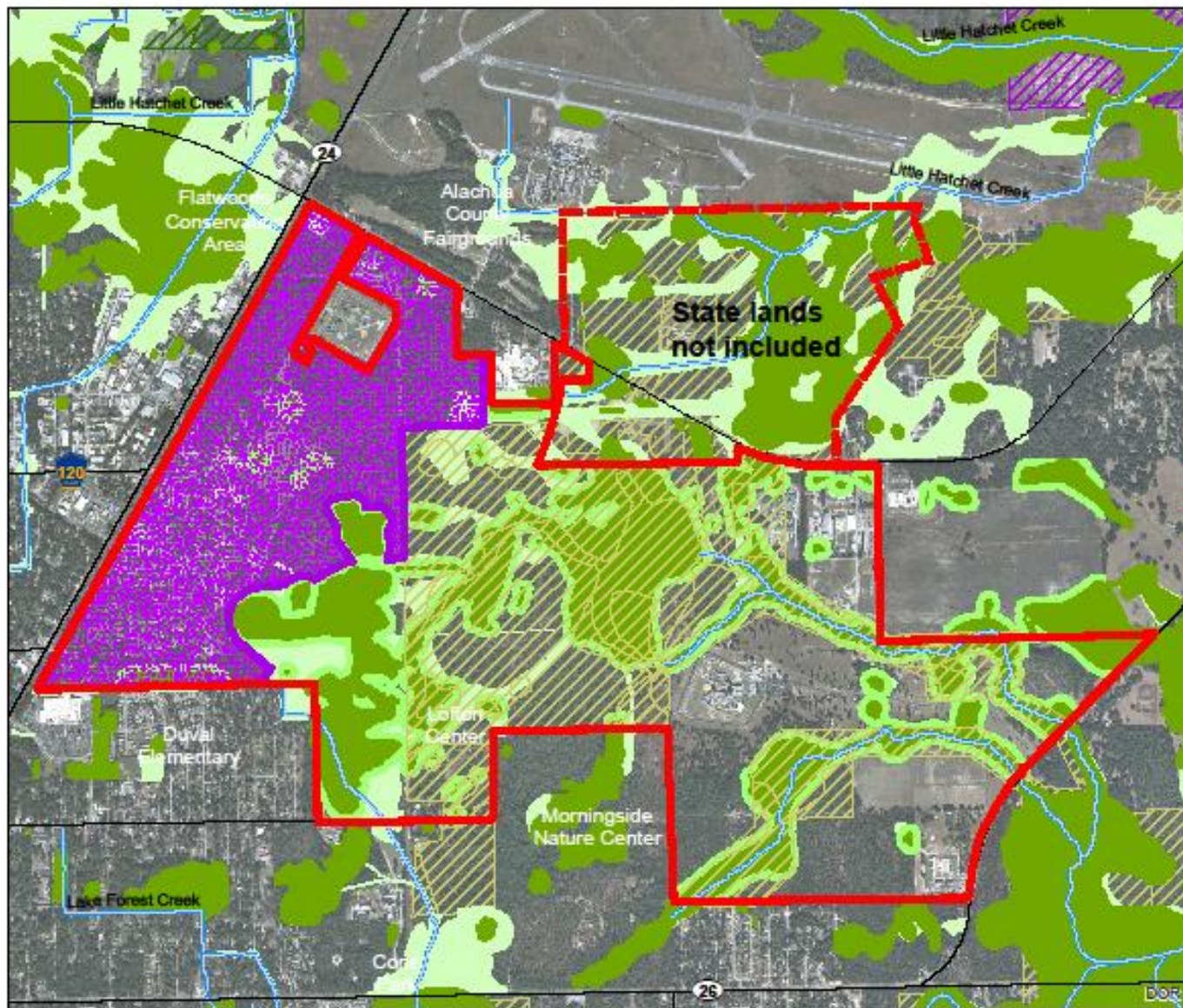
## Potential Waldo Road Job Center [Purple]

### Legend

- Project Area (1,785 acres)
- Job Center
- Gainesville Creeks
- strategic ecosystems
- composite wetlands buffer
- composite wetlands
- FEMA



0 0.25 0.5 Miles



DISCLAIMER: This map and the spatial data it contains are made available as a public service, to be used for reference purposes only. The Alachua County Environmental Protection Department provides this information AS IS without warranty of any kind, implied or expressed, regarding accuracy, completeness, or fitness of use. The quality of the data is dependent on the various sources from which each data layer is obtained.



# Next Steps

- **Onsite Environmental Field Analysis**
- **GIS Land Use Scenario Planning and Analysis**
- **Continue to identify and engage community partners and potentially seek planning assistance grants**