




# **SUNTrail Presentation**

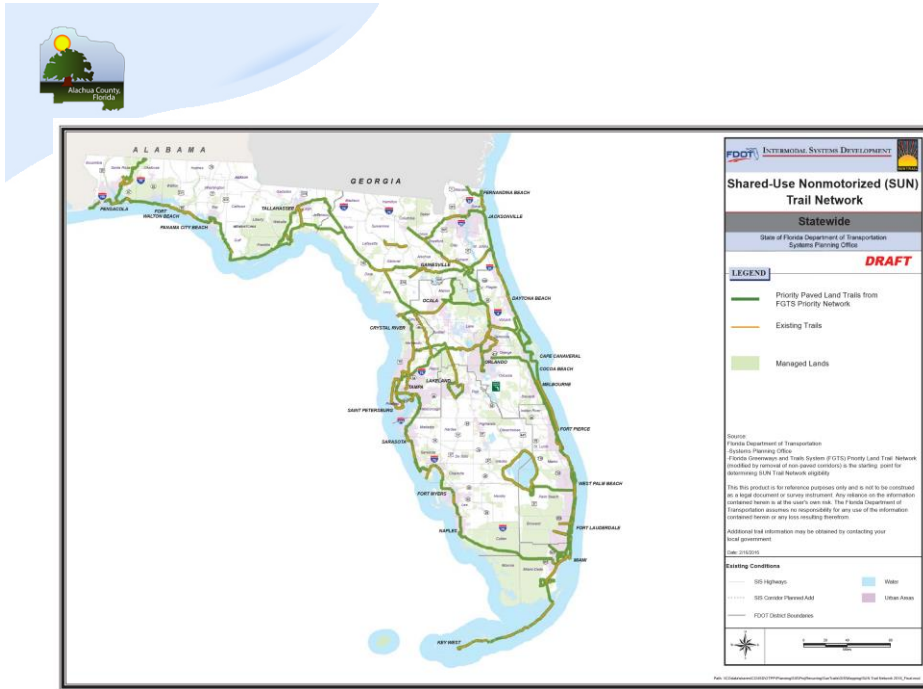
## **Board of County Commissioners**

**Growth Management**  
**Chris Dawson**



## **What is SUNTrail**

- **Shared Use Non-motorized Trail Network**
  - **Enacted by Legislature in 2015**
  - **\$25 million per year from tag fees**
- **Utilizes existing Priority Land Trail Network from Greenways and Trails Council**



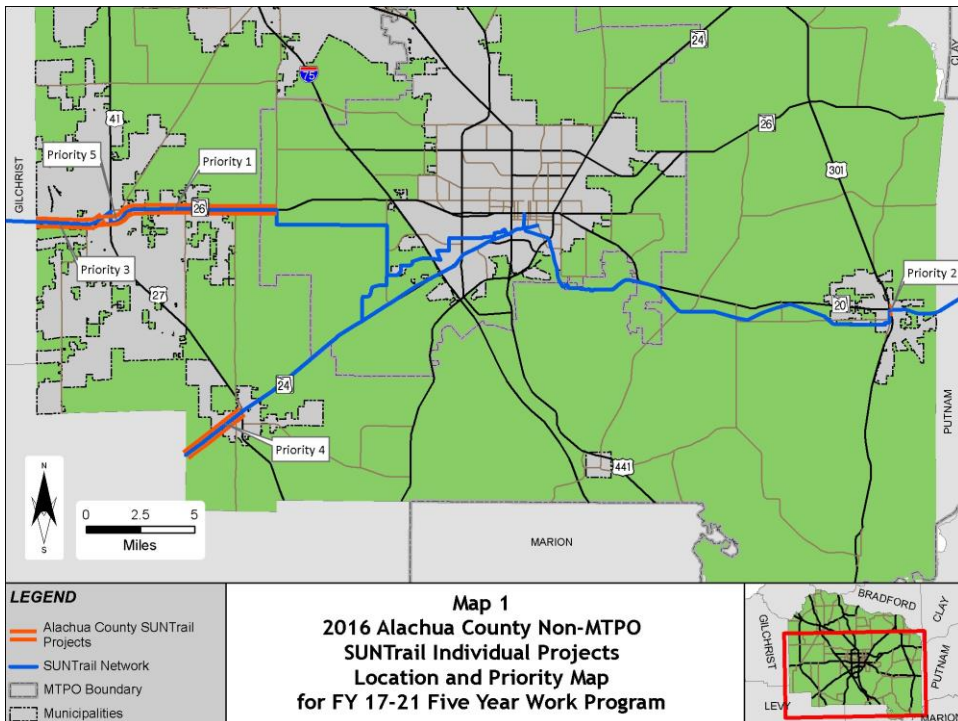
## Project Categories

- Three Project Categories
  1. Any Coast to Coast Connector Project
  2. St. John's to Sea Loop
  3. Individual Projects
- Funding divided approximately equal among the three categories



# Alachua County Outside MTPO Projects

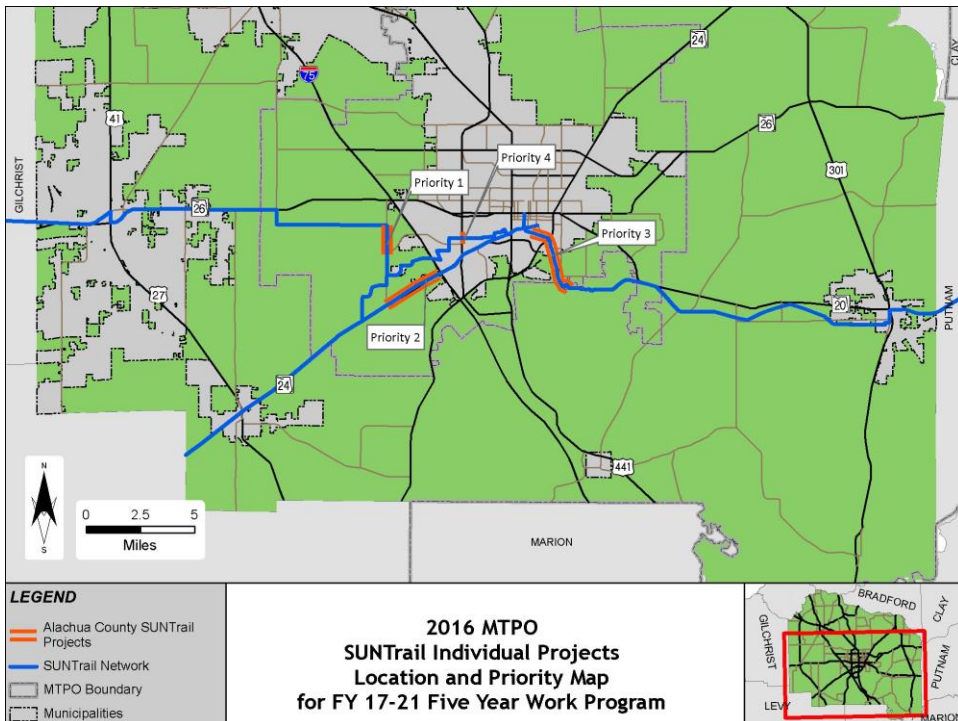
1. Jonesville to Newberry
2. US 301 Grade Separated Crossing
3. Newberry to Gilchrist
4. Archer to Levy County
5. Downtown Newberry





# Alachua County Inside MTPO Projects

1. Tower Road
2. Archer Road
3. Gainesville-Hawthorne Trail Resurface
4. Hull Road Grade Separated Crossing





## Willing Manager Certification

- FDOT will build infrastructure
- Local governments must maintain
- Final maintenance agreement after project selection



## Maintenance Cost

- Annual Regular Maintenance Cost Per Mile
  - Within ROW - \$5,500 per mile
  - Outside ROW - \$7,500 per mile
- Annual Capital Maintenance Per Mile
  - \$4,500 to \$6,500 per mile



## Request

**Adopt the prioritized list of SUNTrail Eligible  
Projects and authorize the Manager to sign  
Willing Manager Certificates for all applications**

---



## Questions?

**Growth Management  
Chris Dawson**