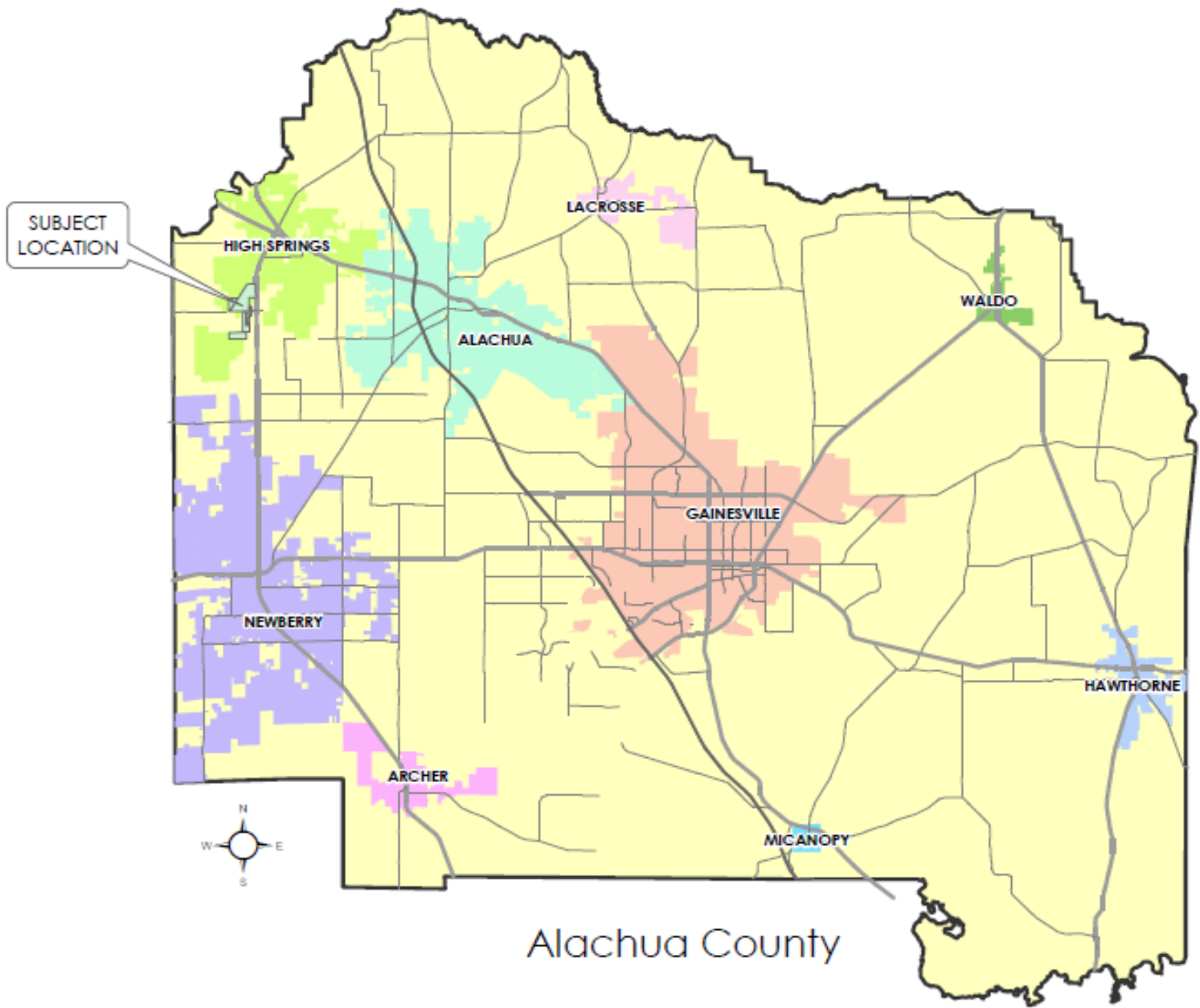


# ALACHUA COUNTY BOARD OF COUNTY COMMISSIONERS PUBLIC HEARING

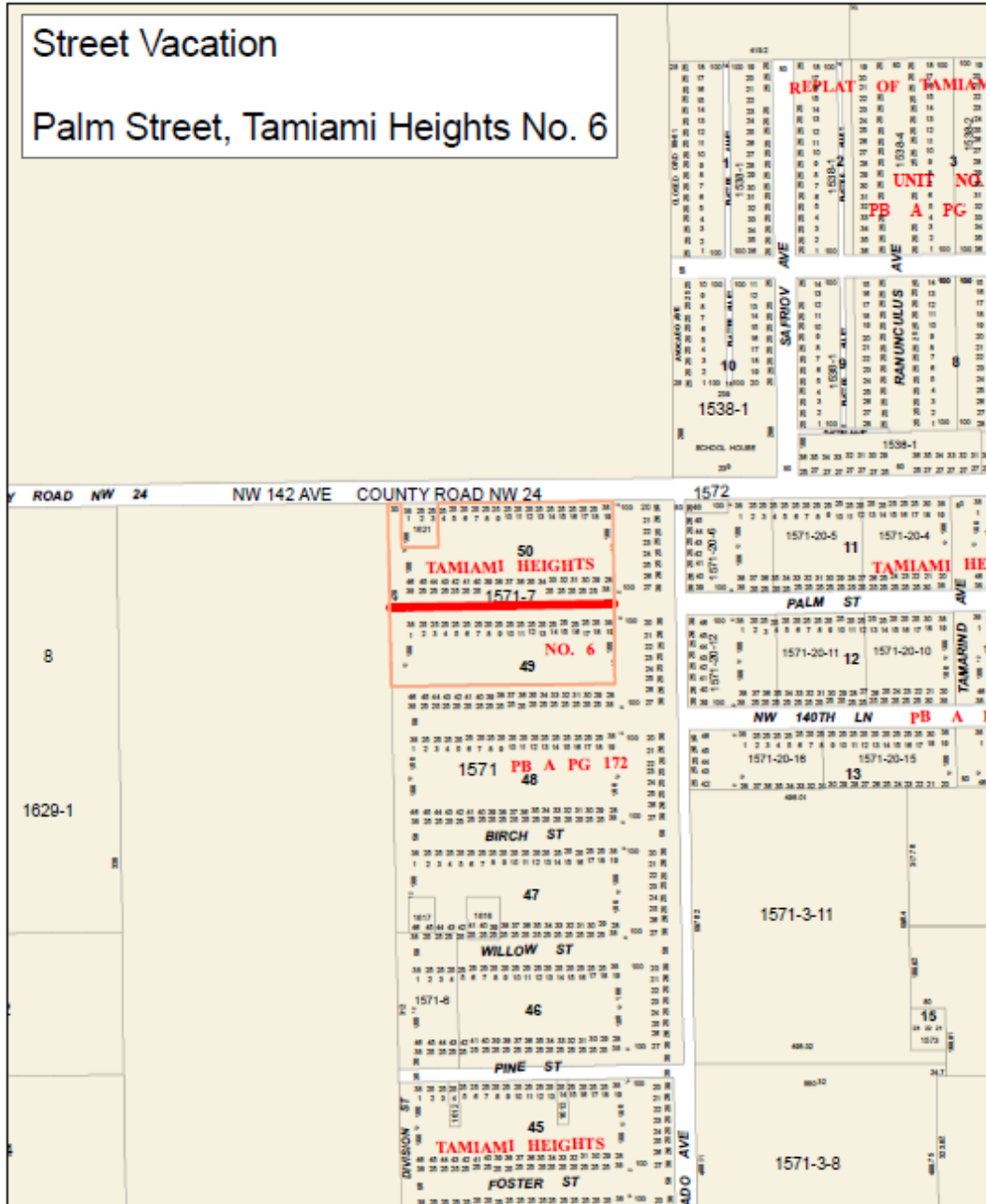
- TAMAMI HEIGHTS, NO 6  
(Palm St) STREET VACATION
- AUGUST 11, 2015
- 5:00 P.M.





# Street Vacation

## Palm Street, Tamiami Heights No. 6



1 inch = 333 feet



Parcel



Palm St



# TAMIAMI HEIGHTS

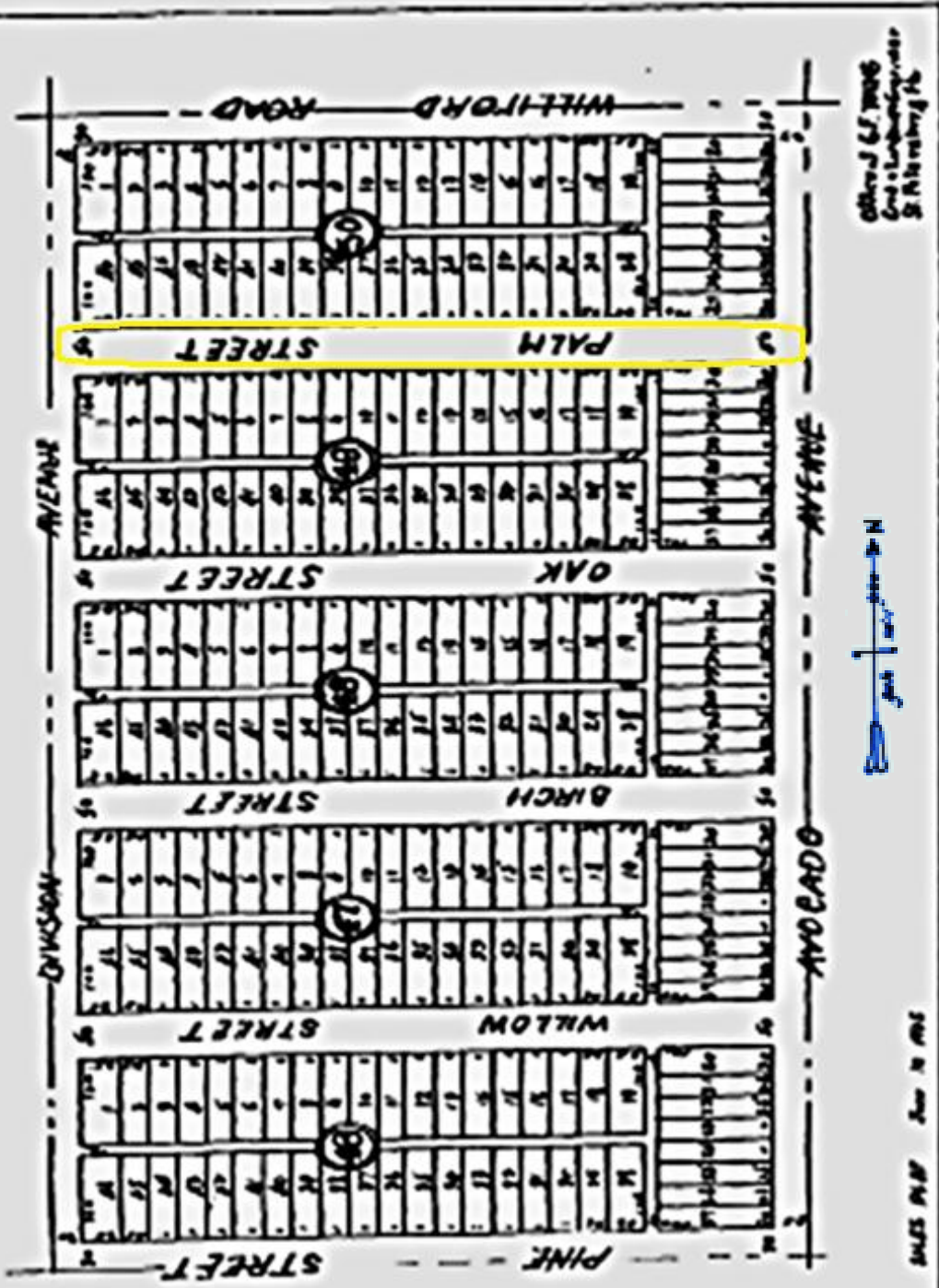
N:6

SUBURB OF HIGH SPRINGS FLORIDA ALACHUA COUNTY  
 being a subdivision of E 1/4 of NE 1/4 of section 26 township 11 Range 17

**FLORIDA LAND SYNDICATE**

HUGHES OF FLORIDA CORP. LAND & DEVELOPMENT COMPANY

FLORIDA ARCADE  
 1425 CENTRAL AVENUE  
 SEFTERSWOOD, FLA.



Order J 67 7006  
 Geo. L. Lumberg, Inc.  
 St. Petersburg, Fla.

