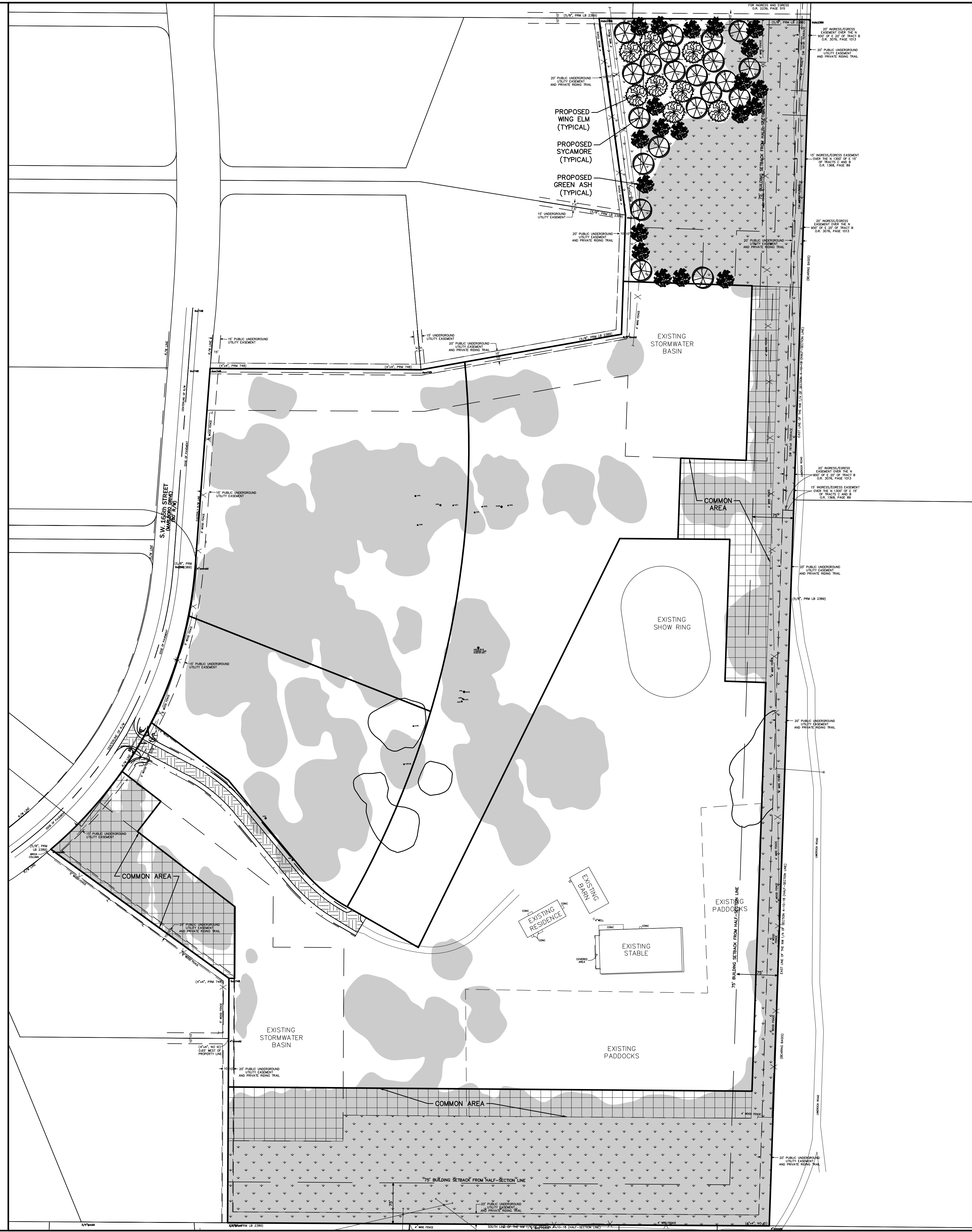


Plotted Jun 18, 2014 - 17:05:31 - TAB
 \\server3\engprojects\Archer Farms\Plan_Sets\2014-06-02 - County_Submittal\A140867.dwg - C0.20 - TREE CANOPY & OPEN

OPEN SPACE/ENVIRONMENTAL RESOURCE DATA TABLE			
PROJECT AREA (ACRES)	44.97 Ac.		100%
PRIMARY OPEN SPACE (ACRES)	EXISTING	PROVIDED	% TOTAL AREA
WETLANDS	0 Ac.	0 Ac.	0%
WETLAND BUFFERS	0 Ac.	0 Ac.	0%
SURFACE WATERS	0 Ac.	0 Ac.	0%
SURFACE WATERS BUFFERS	0 Ac.	0 Ac.	0%
SIGNIFICANT GEOLOGICAL FEATURES	0 Ac.	0 Ac.	0%
SIGNIFICANT GEOLOGICAL FEATURE BUFFERS	0 Ac.	0 Ac.	0%
STRATEGIC ECOSYSTEM	0 Ac.	0 Ac.	0%
LISTED SPECIES HABITAT	0 Ac.	0 Ac.	0%
100 YEAR FLOODPLAIN (FEMA AREA)	0 Ac.	0 Ac.	0%
SIGNIFICANT HABITAT	0 Ac.	0 Ac.	0%
OTHER NATURAL AREAS	9.58 Ac.	9.58 Ac.	21.9%
SECONDARY OPEN SPACE (ACRES)	PROVIDED	% TOTAL AREA	
COMMUNITY GREEN SPACES	0 Ac.	0%	
STORMWATER MANAGEMENT AREAS	0 Ac.	0%	
LANDSCAPED AREAS (NON-RESIDENTIAL ONLY)	0 Ac.	0%	
TOTAL OPEN SPACE PROVIDED (ACRES)	9.58 Ac.	21.3%	



OPEN SPACE DATA			
1. OPEN SPACE AREA REQUIRED			
TOTAL SITE AREA	=	1,955,844 S.F.	= 44.97 ACRES = 100%
REQUIRED OPEN SPACE AREA	=	391,168 S.F.	= 8.98 ACRES = 20%
2. OPEN SPACE AREA PROVIDED			
A. PRIMARY			
-NATURAL AREAS	=	417,305 S.F.	= 9.58 ACRES = 21.3%
TOTAL OPEN SPACE PROVIDED	=	417,305 S.F.	= 9.58 ACRES = 21.3%

3. OPEN SPACE CONSISTENCY STATEMENT

THE MINIMUM 20% OPEN SPACE REQUIREMENT SHALL BE MET FOR THIS PROJECT, CONSISTENT WITH POLICY 5.2.2 OF THE COMPREHENSIVE PLAN AND ALL THE APPLICABLE REQUIREMENTS OUTLINED IN ULDC CHAPTER 407, ARTICLE 4 AND 5 REGARDING LANDSCAPING AND OPEN SPACE. A DETAILED ANALYSIS IS INCLUDED IN THIS DEVELOPMENT APPLICATION UNDER A SEPARATE COVER LABELLED, "ANALYSIS OF ULDC OPEN SPACE REQUIREMENTS."

THE OPEN SPACE PLAN IS CONSISTENT WITH CH. 407.53 AS THE OPEN SPACE PLAN INCLUDES 21.3% PRIMARY OPEN AREA. THE OPEN SPACE AREAS CONSISTS OF MANY LARGE EXISTING CANOPY TREES AND EXISTING NATURAL AREAS. ALL TREE CANOPY WITHIN OPEN SPACE SHALL REMAIN.

TREE CANOPY	
A: 20% TREE CANOPY RETENTION REQUIREMENTS	
• EXISTING CANOPY:	822,788 SQ. FT. = 18.88 AC. (100%)
• CANOPY TO REMAIN:	527,076 SQ. FT. = 12.1 AC. (64.1%)
B: 30% TREE CANOPY IN 20 YEARS REQUIREMENT	
• REQUIRED:	30% OF SITE = 13.49 AC. (30%)
• PROPOSED: EXISTING CANOPY COVERAGE:	527,076 SQ. FT. 12.1 AC. (26.9%)
PROPOSED LANDSCAPE:	61,544 SQ. FT. 1.4 AC. (3.1%)
TOTAL:	588,620 SQ. FT. 13.5 AC. (30%)

PLANTING PLAN			
COMMON NAME	SCIENTIFIC NAME	SIZE (GAL.)	NUMBER OF PLANTINGS
SYCAMORE	PLATANUS OCCIDENTALIS	15 GAL. (40' CROWN)	21 (26,376 S.F.)
WINGED ELM	ULMUS ALATA	15 GAL. (40' CROWN)	8 (10,048 S.F.)
GREEN ASH	FRAXINUS PENNSYLVANICA	15 GAL. (40' CROWN)	20 (25,120 S.F.)
TOTAL:			61,544 S.F.

NOTE:
IRRIGATION SHALL BE PROVIDED TO ALL PROPOSED PLANTINGS VIA TREEGATOR SLOW RELEASE WATERING BAGS AS PER A PROPOSED ALTERNATIVE COMPLIANCE IRRIGATION PLAN.

LEGEND	
	LIMITS OF OPEN SPACE (PRIMARY)
	COMMON AREA
	EXISTING TREE CANOPY
	LIMITS OF PROPOSED PRIVATE EASEMENT ROAD

No.
Date

NORTH

1"=100'

GRAPHIC SCALE

eng, planners & surveyors
eng. denman & associates, inc.
 2406 N.W. 49th ST., GAINESVILLE, FLORIDA, 32604-4602
 TEL: (352) 372-3541 FAX: (352) 372-7249
 E-Mail: info@denmaninc.net

Project: ARCHER FARMS ALACHUA COUNTY, FLORIDA

Sheet Title: TREE CANOPY AND OPEN SPACE PLAN

Project phase: REVISED FINAL DEVELOPMENT PLAN

Designed: SJR Drawn: MAB

Project No: 13-086 Date: 6/20/14

Professional Engineer of Record: Sergio J. Reyes, P.E.

Certificate No. 47311

C0.20