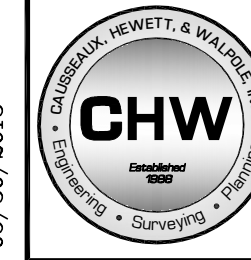


OAKMONT PHASE I, UNIT 1B A PLANNED DEVELOPMENT

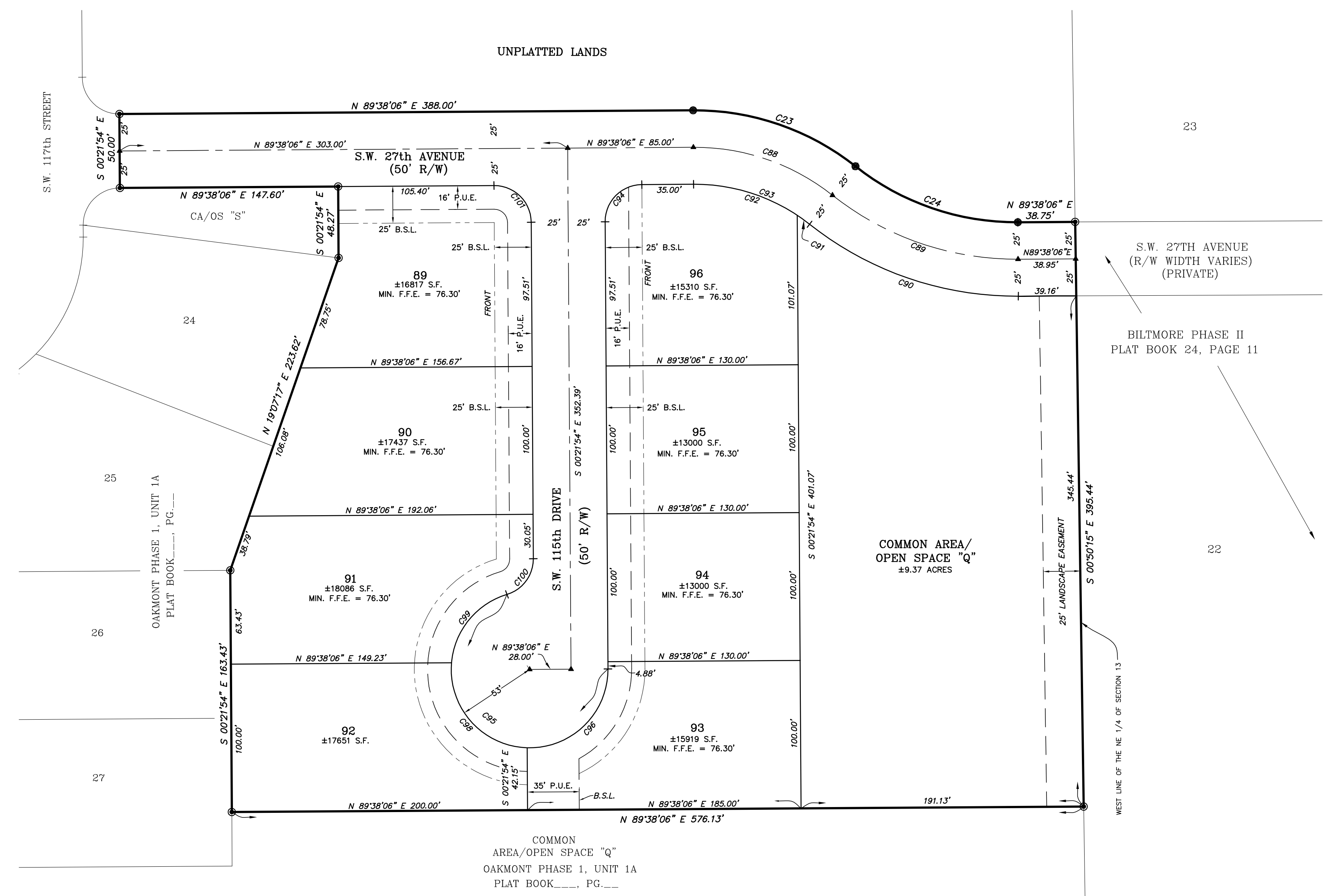
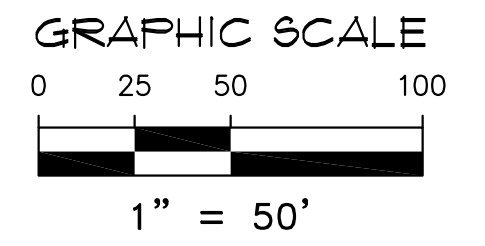
SITUATED IN SECTION 13, TOWNSHIP 10 SOUTH, RANGE 18 EAST,
ALACHUA COUNTY, FLORIDA

R.A.B. 13-0168
05/30/2013



Causseaux, Hewett, & Walpole, Inc.
Engineering • Surveying • Planning
132 NW 76th Drive, Gainesville, Florida 32607
Phone: (352) 331-1976 • Fax: (352) 331-2476 • www.chw-inc.com
LB-5075

PLAT BOOK _____, PAGE _____
SHEET FOUR OF SEVEN



CURVE	LENGTH	RADIUS	DELTA	TANGENT	CHORD	CHORD BEARING
C23	118.39'	175.00'	38°45'40"	61.56'	116.14'	S70°59'04"E
C24	118.39'	175.00'	38°45'40"	61.56'	116.14'	S70°59'04"E
C88	101.48'	150.00'	38°45'40"	52.77'	99.55'	N70°59'04"W
C89	135.30'	200.00'	38°45'40"	70.35'	132.74'	N70°59'04"W
C90	152.21'	225.00'	38°45'40"	79.15'	149.33'	S70°59'04"E
C91	10.26'	125.00'	44°21'01"	5.13'	10.26'	N53°57'20"W
C92	74.30'	125.00'	34°03'29"	38.29'	73.21'	N73°20'10"W
C93	84.56'	125.00'	38°45'40"	43.97'	82.96'	N70°59'04"W
C94	39.27'	25.00'	90°00'00"	25.00'	35.36'	S44°38'06"W
C95	234.60'	53.00'	253°37'03"	70.82'	84.87'	S53°33'24"E
C96	85.25'	53.00'	92°09'46"	55.04'	76.36'	N45°42'58"E
C98	86.14'	53.00'	93°07'32"	55.97'	76.37'	S41°38'23"E
C99	63.21'	53.00'	68°19'45"	35.97'	59.53'	S39°05'15"W
C100	32.12'	25.00'	73°37'02"	18.71'	29.96'	N36°28'37"E
C101	39.27'	25.00'	90°00'00"	25.00'	35.36'	N45°21'54"W

- LEGEND:**
- = PERMANENT REFERENCE MONUMENT - FOUND 5/8" STEEL ROD & CAP MARKED "PRM LB 5075"
 - ▲ = PERMANENT CONTROL POINT - NAIL AND DISK MARKED L.B. 5075 (TO BE SET)
 - = PERMANENT REFERENCE MONUMENT - SET 5/8" STEEL ROD & CAP MARKED L.B. 5075
 - = PERMANENT REFERENCE MONUMENT - FOUND 4" X 4" CONCRETE MONUMENT L.B. 5075
 - S.F. = SQUARE FEET
 - R/W = RIGHT-OF-WAY
 - P.R.M. = PERMANENT REFERENCE MONUMENT
 - P.U.E. = PUBLIC UTILITIES EASEMENT
 - SW.E. = SIDEWALK EASEMENT
 - B.S.L. = BUILDING SETBACK LINE
 - CA = COMMON AREA
 - OS = OPEN SPACE
 - (R) = RADIAL LOT LINE
 - R = RADIUS
 - MIN. F.F.E. = MINIMUM FINISH FLOOR ELEVATION
 - PG = PAGE

- SURVEYOR'S NOTES:**
1. ALL WHOLE FOOT DIMENSIONS ARE INTENDED TO BE ACCURATE TO THE HUNDREDTH OF A FOOT.
 2. ALL LOT LINES ARE NON-RADIAL UNLESS OTHERWISE SHOWN.
 3. THIS PLAT IS SEVEN SHEETS TOTAL, EACH SHEET IS NOT COMPLETE WITHOUT THE OTHERS. SEE SHEET ONE FOR ADDITIONAL SURVEYOR'S NOTES. SEE SHEETS TWO THROUGH SEVEN FOR DETAILED INFORMATION.
 4. PRIMARY AND ACCESSORY BUILDING SETBACKS ARE AS FOLLOWS:
(UNLESS SHOWN OTHERWISE)
FRONT - 5'
SIDE (INTERIOR) - 5'
SIDE (STREET) - 5'
REAR - 10'

Tech: garragh Plt Date: Sep 12, 2013 10:14am Filename: R:\2013\13-0168\Oakmont Phase I Unit 1B - PLAT.dwg