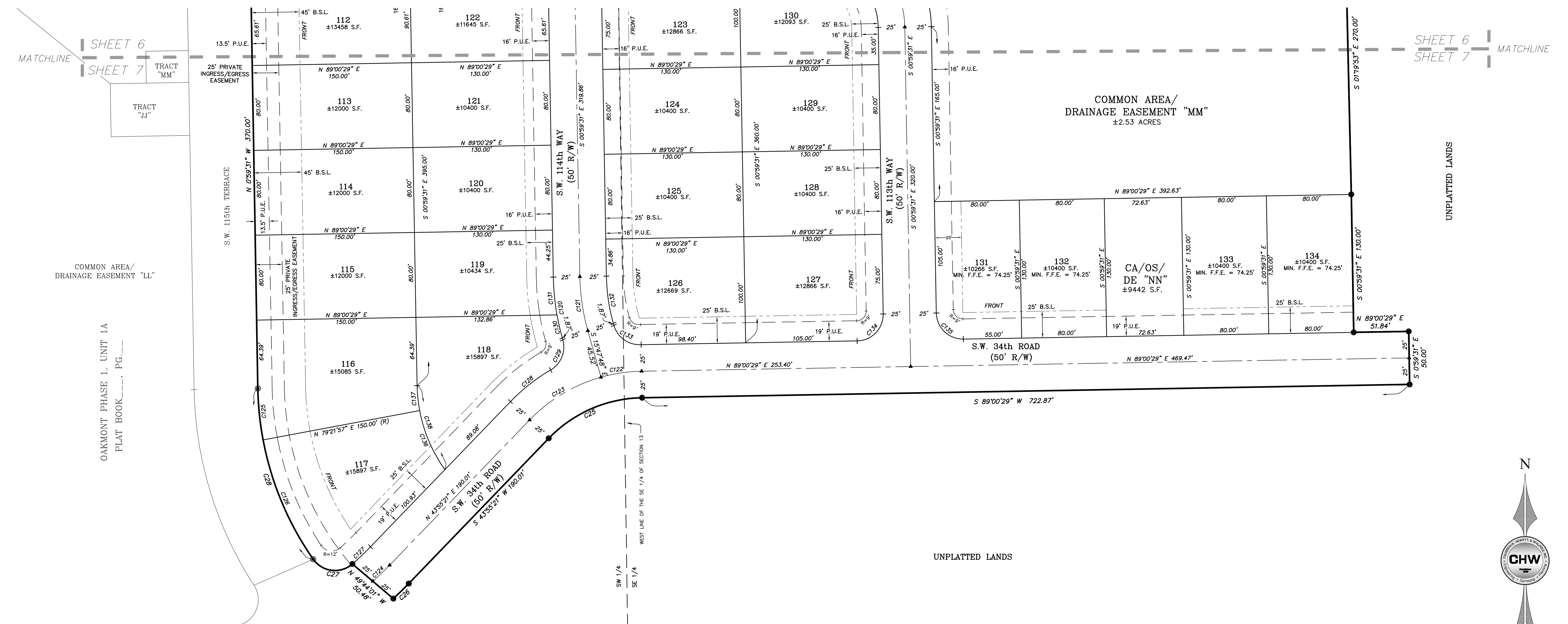


OAKMONT PHASE I, UNIT 1B A PLANNED DEVELOPMENT

SITUATED IN SECTION 13, TOWNSHIP 10 SOUTH, RANGE 18 EAST,
ALACHUA COUNTY, FLORIDA

Causeaux, Hewett, & Walpole, Inc.
Engineering • Surveying • Planning
132 NW 76th Drive, Gainesville, Florida 32607
Phone: (352) 331-1976 • Fax: (352) 331-2476 • www.chw-inc.com
LB-5075



- LEGEND:**
- = PERMANENT REFERENCE MONUMENT - FOUND 5/8" STEEL ROD & CAP MARKED "PRM LB 5075"
 - ▲ = PERMANENT CONTROL POINT - NAIL AND DISK MARKED L.B. 5075 (TO BE SET)
 - = PERMANENT REFERENCE MONUMENT - SET 5/8" STEEL ROD & CAP MARKED L.B. 5075
 - = PERMANENT REFERENCE MONUMENT - FOUND 4" X 4" CONCRETE MONUMENT L.B. 5075
 - S.F. = SQUARE FEET
 - R/W = RIGHT-OF-WAY
 - P.R.M. = PERMANENT REFERENCE MONUMENT
 - P.U.E. = PUBLIC UTILITIES EASEMENT
 - S.W.E. = SIDEWALK EASEMENT
 - B.S.L. = BUILDING SETBACK LINE
 - CA = COMMON AREA
 - OS = OPEN SPACE
 - (R) = RADIAL LOT LINE
 - R = RADIUS
 - MIN. F.F.E. = MINIMUM FINISH FLOOR ELEVATION
 - PG = PAGE

SURVEYOR'S NOTES:

- ALL WHOLE FOOT DIMENSIONS ARE INTENDED TO BE ACCURATE TO THE HUNDREDTH OF A FOOT.
- ALL LOT LINES ARE NON-RADIAL UNLESS OTHERWISE SHOWN.
- THIS PLAT IS SEVEN SHEETS TOTAL, EACH SHEET IS NOT COMPLETE WITHOUT THE OTHERS. SEE SHEET ONE FOR ADDITIONAL SURVEYOR'S NOTES. SEE SHEETS TWO THROUGH SEVEN FOR DETAILED INFORMATION.
- PRIMARY AND ACCESSORY BUILDING SETBACKS ARE AS FOLLOWS: (UNLESS SHOWN OTHERWISE)
FRONT - 5'
SIDE (INTERIOR) - 5'
SIDE (STREET) - 5'
REAR - 10'

CURVE TABLE						
CURVE	LENGTH	RADIUS	DELTA	TANGENT	CHORD	CHORD BEARING
C25	98.36'	125.00'	45°05'08"	51.88'	95.84'	S66°27'55"W
C26	20.31'	325.00'	03°34'50"	10.16'	20.31'	S45°42'46"W
C27	42.01'	25.00'	96°16'14"	27.90'	37.24'	N83°02'12"W
C28	171.63'	290.00'	33°54'34"	88.41'	169.14'	N17°56'48"W
C120	58.14'	225.00'	14°48'17"	29.23'	57.98'	S08°23'40"E
C121	51.68'	200.00'	14°48'17"	25.98'	51.53'	S08°23'40"E
C122	38.76'	150.00'	14°48'17"	19.49'	38.65'	S81°36'20"W
C123	79.27'	150.00'	30°16'51"	40.59'	78.36'	S59°03'46"W
C124	21.93'	300.00'	4°11'14"	10.97'	21.92'	S46°00'58"W
C125	48.80'	290.00'	9°38'32"	24.46'	48.75'	S05°48'47"E
C126	122.83'	290.00'	24°16'02"	62.35'	121.91'	S22°46'04"E
C127	23.54'	275.00'	4°54'20"	11.78'	23.54'	N46°22'31"E
C128	48.27'	175.00'	15°48'17"	24.29'	48.12'	S51°49'27"W
C129	32.95'	25.00'	75°31'21"	19.36'	30.62'	N21°57'52"E
C130	22.24'	225.00'	5°39'46"	11.13'	22.23'	S12°57'55"E
C131	35.90'	225.00'	9°08'32"	17.99'	35.86'	S05°33'47"E
C132	45.22'	175.00'	14°48'17"	22.74'	45.09'	S08°23'40"E
C133	33.96'	25.00'	77°40'07"	20.17'	31.42'	S54°40'13"E
C134	39.27'	25.00'	90°00'00"	25.00'	35.36'	N44°00'29"E
C135	39.27'	25.00'	90°00'00"	25.00'	35.36'	S45°59'31"E
C136	61.01'	140.00'	24°58'14"	31.00'	60.53'	S23°07'10"E
C137	23.56'	140.00'	9°38'32"	11.81'	23.53'	S05°48'47"E
C138	84.57'	140.00'	34°36'45"	43.62'	83.29'	S18°17'54"E



Tech: garruh; Plot Date: Sep 12, 2013 10:16am; Filename: R:\2013\13-0185\Oakmont Phase I Unit 1B - PLAT.dwg