



# ALACHUA COUNTY TRANSPORTATION ALTERNATIVE PROGRAM PRIORITIES FOR FDOT WORK PROGRAM Fiscal Year 2016 – 2020

Presentation to Board of  
County Commissioners  
November 12, 2013



Each year the FDOT updates its  
Five-Year Work Program and  
requests that Alachua County  
submit transportation project  
priorities for consideration as part  
of that update process.



## Alachua County asks municipalities to submit transportation project priorities for consideration as part of that update process.

- All municipalities contacted
- The current 5 year work program has previous applications funded in LaCrosse, Hawthorne, Micanopy and in the unincorporated area (Archer Braid, SW 8<sup>th</sup> Ave, Melrose)
- New projects ranked by County staff



## MULTI-MODAL FISCAL YEAR 2015 – 2019

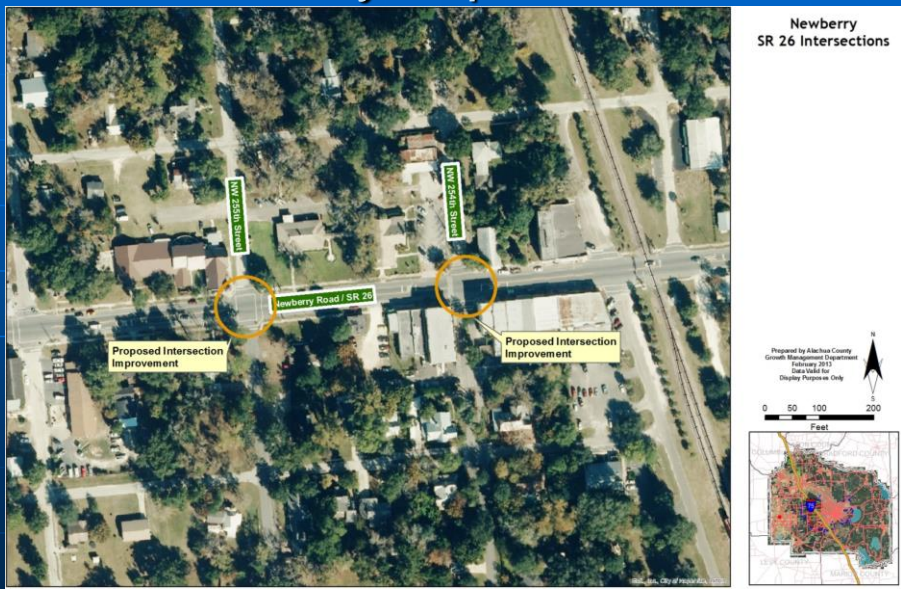
### **Project Location and Description**

1. Unincorporated – Waldo Road Trail Extension Phase 1 from NE 47<sup>th</sup> Avenue to Austin Cary Memorial Forest
2. Newberry – State Road 26 Intersection Improvements for Bicycles and Pedestrians

# Waldo Road Trail Extension



# Newberry Improvements





# Staff Recommendation

1. Approve the priority list for transmittal to the Florida Department of Transportation (FDOT).