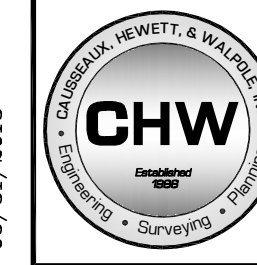


# OAKMONT PHASE I, UNIT 1D A PLANNED DEVELOPMENT

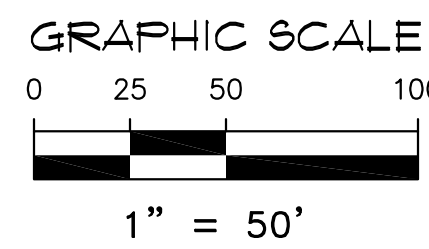
SITUATED IN SECTION 13, TOWNSHIP 10 SOUTH, RANGE 18 EAST,  
ALACHUA COUNTY, FLORIDA

R.A.B. 13-0170  
05/31/2013



**Causseaux, Hewett, & Walpole, Inc.**  
Engineering • Surveying • Planning  
132 NW 76th Drive, Gainesville, Florida 32607  
Phone: (352) 331-1976 • Fax: (352) 331-2476 • www.chw-inc.com  
LB-5075

PLAT BOOK \_\_\_\_\_, PAGE \_\_\_\_\_  
SHEET THREE OF FOUR



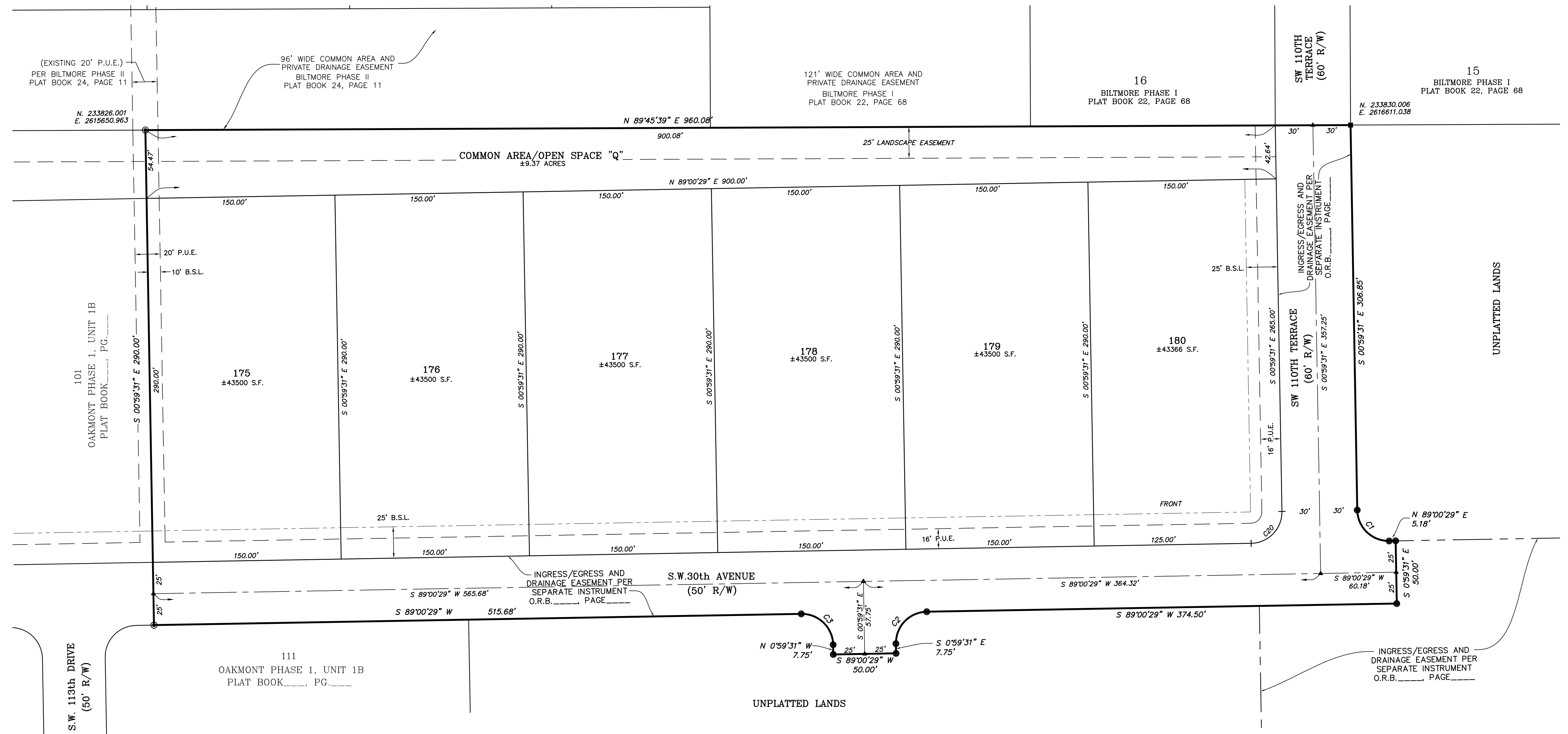
**LEGEND:**

- = FOUND 5/8" STEEL ROD & CAP (PRM LB 5075)
- ▲ = PERMANENT CONTROL POINT - NAIL AND DISK MARKED LB. 5075 (TO BE SET)
- = PERMANENT REFERENCE MONUMENT - SET 5/8" STEEL ROD & CAP MARKED LB. 5075
- = PERMANENT REFERENCE MONUMENT - FOUND 4" X 4" CONCRETE MONUMENT LB. 5075
- S.F. = SQUARE FEET
- R/W = RIGHT-OF-WAY
- P.U.E. = PUBLIC UTILITIES EASEMENT
- S.W.E. = SIDEWALK EASEMENT
- B.S.L. = BUILDING SETBACK LINE
- CA = COMMON AREA
- OS = OPEN SPACE
- (R) = RADIAL LOT LINE
- R = RADIUS
- MIN. F.F.E. = MINIMUM FINISH FLOOR ELEVATION
- PG = PAGE

CURVE DATA TABLE						
CURVE	LENGTH	RADIUS	DELTA	TANGENT	CHORD	CHORD BEARING
C1	39.27'	25.00'	90°00'00"	25.00'	35.36'	S 45°59'31" E
C2	39.27'	25.00'	90°00'00"	25.00'	35.36'	S 44°00'29" W
C3	39.27'	25.00'	90°00'00"	25.00'	35.36'	N 45°59'31" W
C20	39.27'	25.00'	90°00'00"	25.00'	35.36'	N 44°00'29" E

**NOTE:**

1. ALL WHOLE FOOT DIMENSIONS ARE INTENDED TO BE ACCURATE TO THE HUNDRETH OF A FOOT.
2. ALL LOT LINES ARE NON-RADIAL UNLESS OTHERWISE SHOWN.
3. THIS PLAT IS FOUR SHEETS TOTAL, EACH SHEET IS NOT COMPLETE WITHOUT THE OTHERS. SEE SHEET ONE AND TWO FOR ADDITIONAL SURVEYOR'S NOTES. SEE SHEETS THREE AND FOUR FOR DETAILED INFORMATION.
4. PRIMARY AND ACCESSORY BUILDING SETBACKS ARE AS FOLLOWS:  
(UNLESS SHOWN OTHERWISE)  
FRONT - 5'  
SIDE (INTERIOR) - 5'  
SIDE (STREET) - 5'  
REAR - 10'



Tech: garrinh Plot Date: Sep 12, 2013 12:20pm Filename: R:\2013\13-0170\Drawn Final\Phase 1 Unit 1D - PLAT.dwg