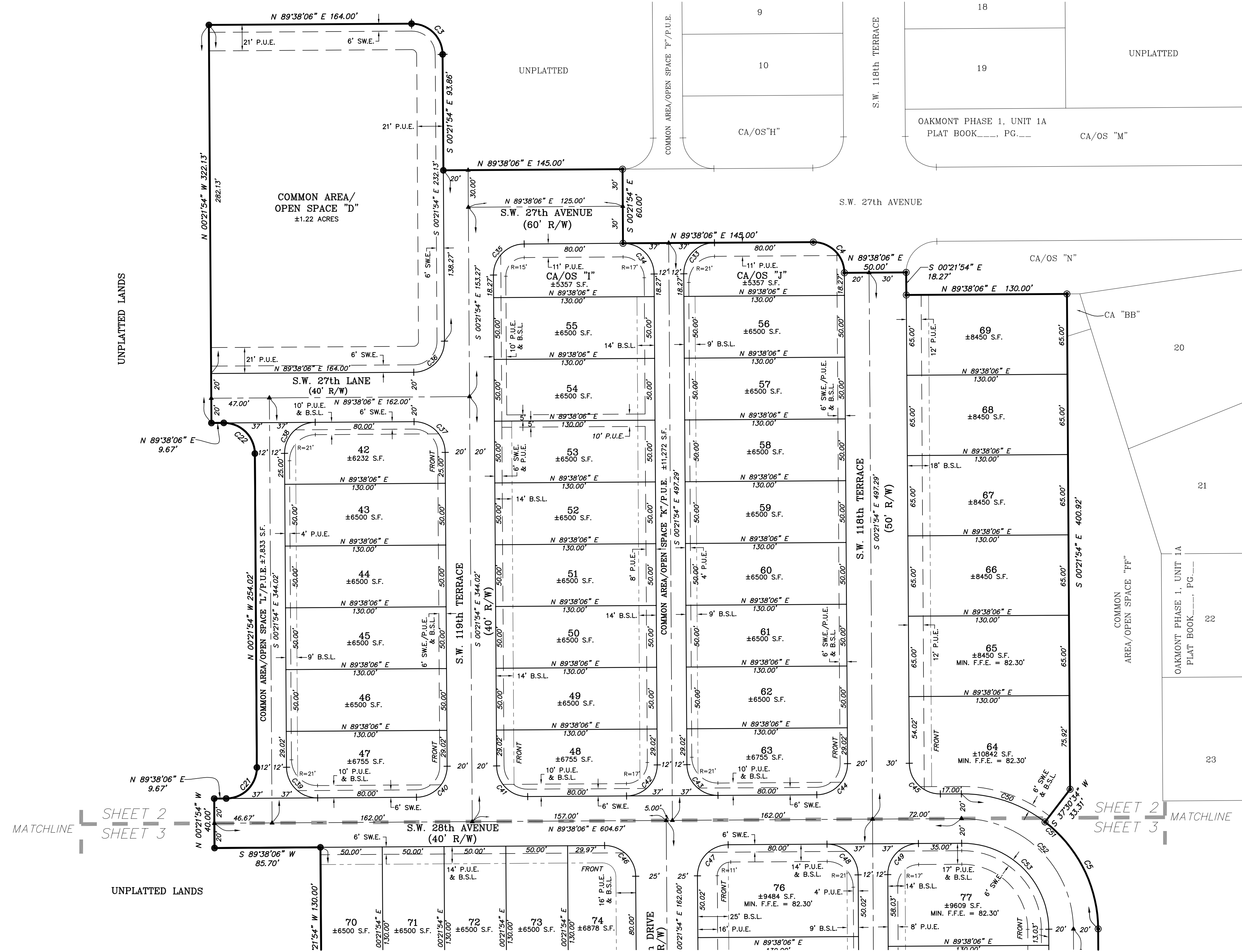
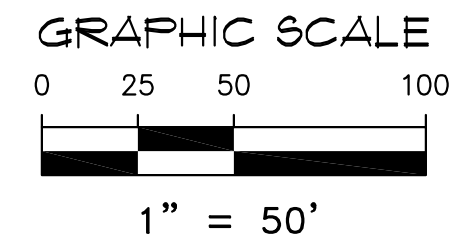


OAKMONT PHASE I, UNIT 1B A PLANNED DEVELOPMENT

SITUATED IN SECTION 13, TOWNSHIP 10 SOUTH, RANGE 18 EAST,
ALACHUA COUNTY, FLORIDA

Causeaux, Hewett, & Walpole, Inc.
Engineering • Surveying • Planning
132 NW 76th Drive, Gainesville, Florida 32607
Phone: (352) 331-1976 • Fax: (352) 331-2476 • www.chw-inc.com
LB-5075

PLAT BOOK _____, PAGE _____
SHEET TWO OF SEVEN



- LEGEND:**
- = PERMANENT REFERENCE MONUMENT - FOUND 5/8" STEEL ROD & CAP MARKED "PRM LB 5075"
 - ▲ = PERMANENT CONTROL POINT - NAIL AND DISK MARKED L.B. 5075 (TO BE SET)
 - = PERMANENT REFERENCE MONUMENT - SET 5/8" STEEL ROD & CAP MARKED L.B. 5075
 - = PERMANENT REFERENCE MONUMENT - FOUND 4" X 4" CONCRETE MONUMENT L.B. 5075
 - S.F. = SQUARE FEET
 - R/W = RIGHT-OF-WAY
 - P.R.M. = PERMANENT REFERENCE MONUMENT
 - P.U.E. = PUBLIC UTILITIES EASEMENT
 - S.W.E. = SIDEWALK EASEMENT
 - B.S.L. = BUILDING SETBACK LINE
 - CA = COMMON AREA
 - OS = OPEN SPACE
 - (R) = RADIAL LOT LINE
 - R = RADIUS
 - MIN. F.F.E. = MINIMUM FINISH FLOOR ELEVATION
 - PG = PAGE

CURVE	LENGTH	RADIUS	DELTA	TANGENT	CHORD	CHORD BEARING
C3	39.27'	25.00'	90°00'00"	25.00'	35.36'	S45°21'54"E
C4	39.27'	25.00'	90°00'00"	25.01'	35.36'	S45°21'54"E
C5	100.05'	110.00'	52°06'48"	53.79'	96.64'	S26°25'18"E
C21	39.27'	25.00'	90°00'00"	25.00'	35.36'	N44°38'06"E
C22	39.27'	25.00'	90°00'00"	25.00'	35.36'	N45°21'54"W
C33	39.27'	25.00'	90°00'00"	25.00'	35.36'	S44°38'06"W
C34	39.27'	25.00'	90°00'00"	25.00'	35.36'	N45°21'54"W
C35	39.27'	25.00'	90°00'00"	25.00'	35.36'	S44°38'06"W
C36	39.27'	25.00'	90°00'00"	25.00'	35.36'	N44°38'06"E
C37	39.27'	25.00'	90°00'00"	25.00'	35.36'	N45°21'54"W
C38	39.27'	25.00'	90°00'00"	25.00'	35.36'	S44°38'06"W
C39	39.27'	25.00'	90°00'00"	25.00'	35.36'	N45°21'54"E
C40	39.27'	25.00'	90°00'00"	25.00'	35.36'	N44°38'06"E
C41	39.27'	25.00'	90°00'00"	25.00'	35.36'	S45°21'54"E
C42	39.27'	25.00'	90°00'00"	25.00'	35.36'	N44°38'06"E
C43	39.27'	25.00'	90°00'00"	25.00'	35.36'	S45°21'54"E
C44	39.27'	25.00'	90°00'00"	25.00'	35.36'	N44°38'06"E
C45	39.27'	25.00'	90°00'00"	25.00'	35.36'	S45°21'54"E
C46	39.27'	25.00'	90°00'00"	25.00'	35.36'	N45°21'54"W
C47	39.27'	25.00'	90°00'00"	25.00'	35.36'	S44°38'06"W
C48	39.27'	25.00'	90°00'00"	25.00'	35.36'	N45°21'54"W
C49	39.27'	25.00'	90°00'00"	25.00'	35.36'	S44°38'06"W
C50	72.74'	110.00'	37°53'12"	37.75'	71.42'	N71°25'18"W
C51	172.79'	110.00'	90°00'00"	110.00'	155.56'	N45°21'54"W
C52	141.37'	90.00'	90°00'00"	90.00'	127.28'	N45°21'54"W
C53	109.96'	70.00'	90°00'00"	70.00'	98.99'	N45°21'54"W

- SURVEYOR'S NOTES:**
- ALL WHOLE FOOT DIMENSIONS ARE INTENDED TO BE ACCURATE TO THE HUNDREDTH OF A FOOT.
 - ALL LOT LINES ARE NON-RADIAL UNLESS OTHERWISE SHOWN.
 - THIS PLAT IS SEVEN SHEETS TOTAL, EACH SHEET IS NOT COMPLETE WITHOUT THE OTHERS. SEE SHEET ONE FOR ADDITIONAL SURVEYOR'S NOTES. SEE SHEETS TWO THROUGH SEVEN FOR DETAILED INFORMATION.
 - PRIMARY AND ACCESSORY BUILDING SETBACKS ARE AS FOLLOWS: (UNLESS SHOWN OTHERWISE)
FRONT - 5'
SIDE (INTERIOR) - 5'
SIDE (STREET) - 5'
REAR - 10'