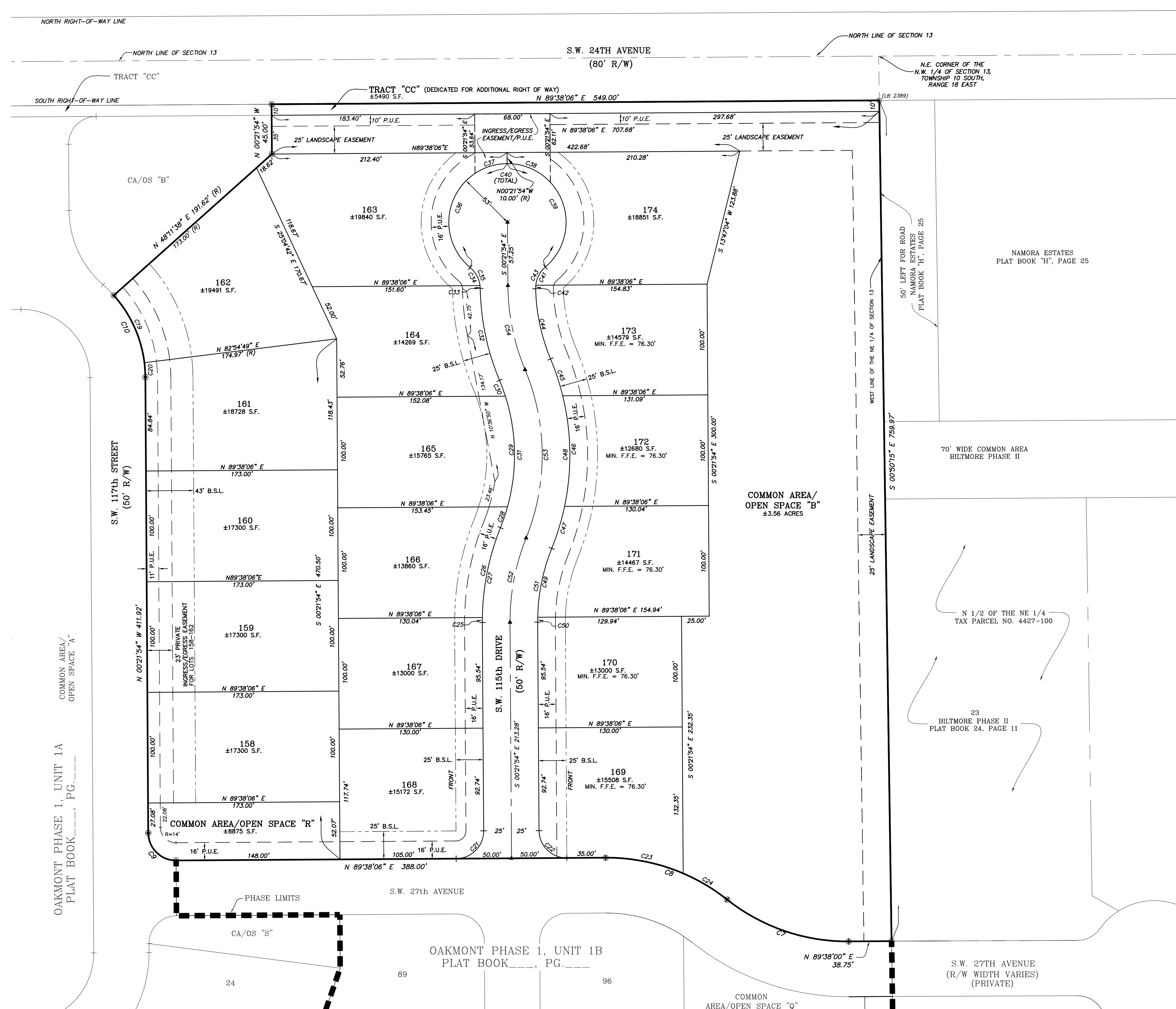


OAKMONT PHASE I, UNIT 1C A PLANNED DEVELOPMENT

SITUATED IN SECTION 13, TOWNSHIP 10 SOUTH, RANGE 18 EAST,
ALACHUA COUNTY, FLORIDA



- LEGEND:**
- = PERMANENT REFERENCE MONUMENT - FOUND 5/8" STEEL ROD & CAP MARKED "RM LB 5075"
 - ▲ = PERMANENT CONTROL POINT - NAIL AND DISK MARKED LB. 5075
 - = PERMANENT REFERENCE MONUMENT - SET 5/8" STEEL ROD & CAP MARKED LB. 5075
 - = PERMANENT REFERENCE MONUMENT - FOUND 4" x 4" CONCRETE MONUMENT LB. 5075
 - S.F. = SQUARE FEET
 - R/W = RIGHT-OF-WAY
 - P.U.E. = PUBLIC UTILITIES EASEMENT
 - PR.U.E. = PRIVATE PUBLIC UTILITIES EASEMENT
 - SW.E. = SIDEWALK EASEMENT
 - B.S.L. = BUILDING SETBACK LINE
 - CA = COMMON AREA
 - OS = OPEN SPACE
 - (R) = RADIAL LOT LINE
 - R = RADIUS
 - MIN. F.F.E. = MINIMUM FINISH FLOOR ELEVATION
 - PG = PAGE

CURVE TABLE					
CURVE	LENGTH	RADIUS	CHORD	CHORD BEARING	TANGENT
C7	118.39'	175.00'	38'45"40"	61.56'	116.14'
C8	118.39'	175.00'	38'45"40"	61.56'	116.14'
C9	39.27'	25.00'	90'00"00"	25.00'	35.36'
C10	81.01'	112.00'	41'26"28"	42.37'	79.25'
C19	67.87'	112.00'	34'43"11"	35.01'	66.84'
C20	13.14'	112.00'	6'43"17"	6.58'	13.13'
C21	39.27'	25.00'	90'00"00"	25.00'	35.36'
C22	39.27'	25.00'	90'00"00"	25.00'	35.36'
C23	72.02'	175.00'	23'34"47"	36.53'	71.51'
C24	46.37'	175.00'	15'10"53"	23.32'	46.23'
C25	4.46'	225.01'	1'08"11"	2.23'	4.46'
C26	83.34'	225.00'	21'13"24"	42.16'	82.87'
C27	87.81'	225.00'	22'21"35"	44.47'	87.25'
C28	19.96'	175.00'	6'32"25"	10.00'	19.97'
C29	101.42'	175.00'	33'22"37"	52.18'	100.01'
C30	15.19'	175.00'	4'58"22"	7.60'	15.18'
C31	136.59'	175.00'	44'43"10"	71.99'	133.15'
C32	85.44'	225.00'	21'45"24"	43.24'	84.93'
C33	2.50'	25.00'	5'43"43"	1.25'	2.50'
C34	19.12'	25.00'	43'50"54"	10.06'	18.67'
C35	21.62'	25.00'	49'32"31"	11.54'	20.95'
C36	129.64'	53.00'	140'08"42"	146.19'	99.65'
C37	30.69'	53.00'	33'10"23"	15.79'	30.26'
C38	43.83'	53.00'	47'22"44"	23.25'	42.59'
C39	129.61'	53.00'	140'06"36"	146.05'	99.64'
C40	259.24'	53.00'	280'15"18"	44.27'	67.95'
C41	19.13'	25.00'	43'50"54"	10.06'	18.67'
C42	3.17'	25.00'	7'15"18"	1.58'	3.16'
C43	22.30'	25.00'	51'06"13"	11.95'	21.57'
C44	65.26'	175.00'	21'21"58"	33.01'	64.88'
C45	35.03'	225.00'	8'55"13"	17.55'	34.99'
C46	100.85'	225.00'	25'40"50"	51.29'	100.01'
C47	39.74'	225.00'	10'07"07"	19.92'	39.68'
C48	175.61'	225.00'	44'43"10"	92.55'	171.19'
C49	63.83'	175.00'	20'53"55"	32.27'	63.48'
C50	4.46'	175.00'	1'27"40"	2.23'	4.46'
C51	68.29'	175.00'	22'21"35"	34.59'	67.86'
C52	78.05'	200.00'	22'21"35"	39.53'	77.56'
C53	156.10'	200.00'	44'43"10"	82.27'	152.17'
C54	78.05'	200.00'	22'21"35"	39.53'	77.56'

- SURVEYOR'S NOTES:**
- ALL WHOLE FOOT DIMENSIONS ARE INTENDED TO BE ACCURATE TO THE HUNDREDTH OF A FOOT.
 - ALL LOT LINES ARE NON-RADIAL UNLESS OTHERWISE SHOWN.
 - THIS PLAT IS THREE SHEETS TOTAL, EACH SHEET IS NOT COMPLETE WITHOUT THE OTHERS. SEE SHEET ONE FOR ADDITIONAL SURVEYOR'S NOTES. SEE SHEETS TWO AND THREE FOR DETAILED INFORMATION.
 - PRIMARY AND ACCESSORY BUILDING SETBACKS ARE AS FOLLOWS: (UNLESS SHOWN OTHERWISE)
 - FRONT - 5'
 - SIDE (INTERIOR) - 5'
 - SIDE (STREET) - 5'
 - REAR - 10'

NOTE:
FLOOD ZONE DESIGNATIONS SHOWN HEREON ARE BASED ON A CONDITIONAL LETTER OF MAP REVISION BASED ON FIRM (CLOMR-F), RECEIVED FROM THE FEDERAL EMERGENCY MANAGEMENT AGENCY, CASE NUMBER 07-04-0088C, DATED JANUARY 11, 2007.