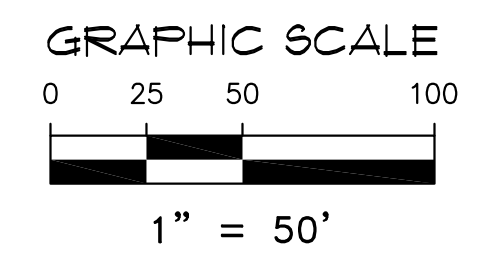
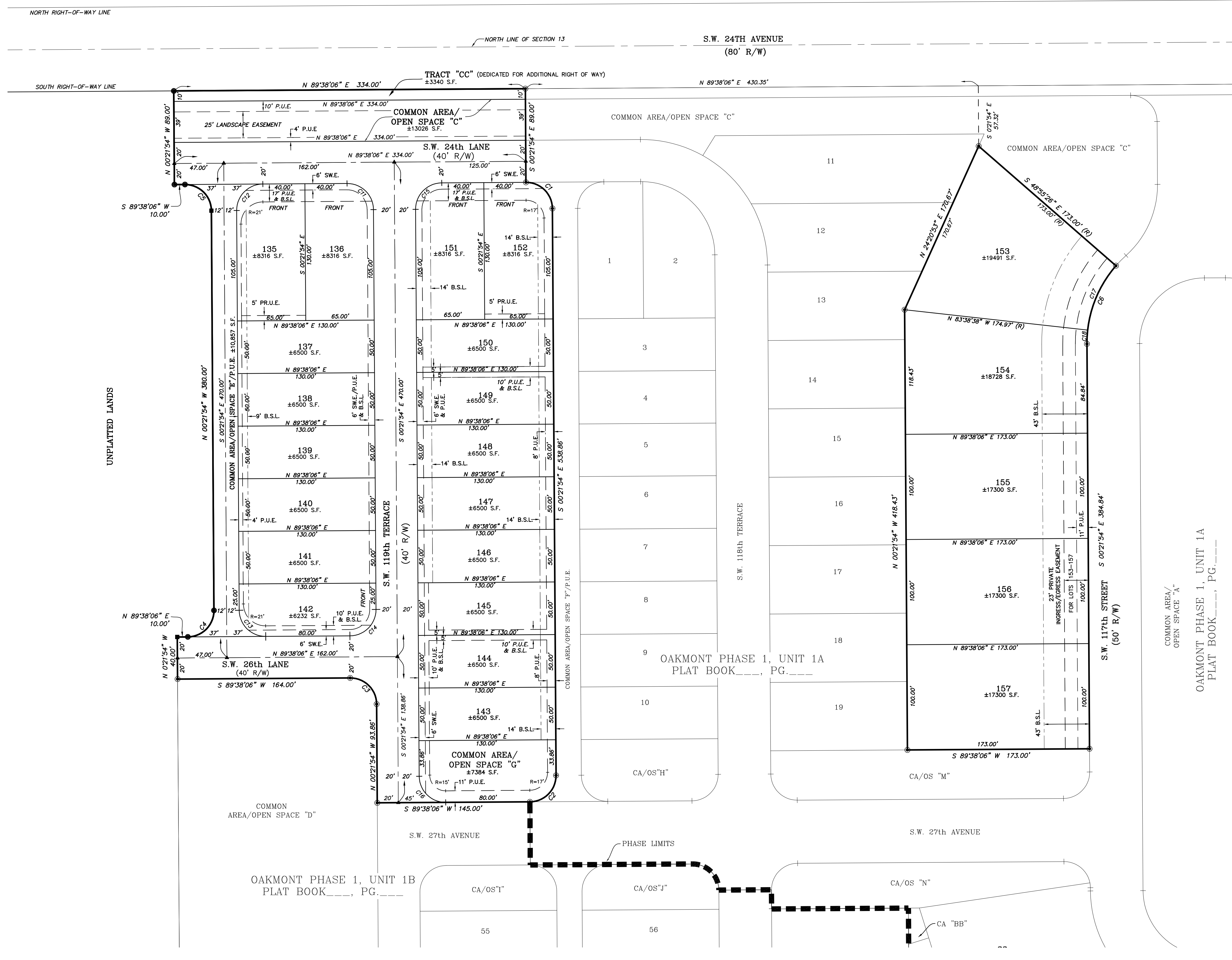


OAKMONT PHASE I, UNIT 1C A PLANNED DEVELOPMENT

SITUATED IN SECTION 13, TOWNSHIP 10 SOUTH, RANGE 18 EAST,
ALACHUA COUNTY, FLORIDA

CHW Causseaux, Hewett, & Walpole, Inc.
Engineering • Surveying • Planning
132 NW 76th Drive, Gainesville, Florida 32607
Phone: (352) 331-1976 • Fax: (352) 331-2476 • www.chw-inc.com
LB-5075

PLAT BOOK _____, PAGE _____
SHEET TWO OF THREE



- LEGEND:**
- = PERMANENT REFERENCE MONUMENT - FOUND 5/8" STEEL ROD & CAP MARKED "TRM LB 5075"
 - ▲ = PERMANENT CONTROL POINT - NAIL AND DISK MARKED LB. 5075 (TO BE SET)
 - = PERMANENT REFERENCE MONUMENT - SET 5/8" STEEL ROD & CAP MARKED LB. 5075
 - = PERMANENT REFERENCE MONUMENT - FOUND 4" X 4" CONCRETE MONUMENT LB. 5075
 - S.F. = SQUARE FEET
 - R/W = RIGHT-OF-WAY
 - P.U.E. = PUBLIC UTILITIES EASEMENT
 - PR.U.E. = PRIVATE PUBLIC UTILITIES EASEMENT
 - S.W.E. = SIDEWALK EASEMENT
 - B.S.L. = BUILDING SETBACK LINE
 - CA = COMMON AREA
 - OS = OPEN SPACE
 - (R) = RADIAL LOT LINE
 - R = RADIUS
 - MIN. F.F.E. = MINIMUM FINISH FLOOR ELEVATION
 - PG = PAGE

- SURVEYOR'S NOTES:**
1. ALL WHOLE FOOT DIMENSIONS ARE INTENDED TO BE ACCURATE TO THE HUNDRETH OF A FOOT.
 2. ALL LOT LINES ARE NON-RADIAL UNLESS OTHERWISE SHOWN.
 3. THIS PLAT IS THREE SHEETS TOTAL, EACH SHEET IS NOT COMPLETE WITHOUT THE OTHERS. SEE SHEET ONE FOR ADDITIONAL SURVEYOR'S NOTES. SEE SHEETS TWO AND THREE FOR DETAILED INFORMATION.
 4. PRIMARY AND ACCESSORY BUILDING SETBACKS ARE AS FOLLOWS: (UNLESS SHOWN OTHERWISE)
FRONT - 5'
SIDE (INTERIOR) - 5'
SIDE (STREET) - 5'
REAR - 10'

CURVE	LENGTH	RADIUS	DELTA	TANGENT	CHORD	CHORD BEARING
C1	39.27'	25.00'	90°00'00"	25.00'	35.36'	S45°21'54"E
C2	39.27'	25.00'	90°00'00"	25.00'	35.36'	S44°38'06"W
C3	39.27'	25.00'	90°00'00"	25.00'	35.36'	N45°21'54"W
C4	39.27'	25.00'	90°00'00"	25.00'	35.36'	N44°38'06"E
C5	39.27'	25.00'	90°00'00"	25.00'	35.36'	N45°21'54"W
C6	81.01'	112.00'	41°26'28"	42.37'	79.25'	S20°21'20"W
C11	39.27'	25.00'	90°00'00"	25.00'	35.36'	N45°21'54"W
C12	39.27'	25.00'	90°00'00"	25.00'	35.36'	S44°38'06"W
C13	39.27'	25.00'	90°00'00"	25.00'	35.36'	S45°21'54"E
C14	39.27'	25.00'	90°00'00"	25.00'	35.36'	S44°38'06"E
C15	39.27'	25.00'	90°00'00"	25.00'	35.36'	S44°38'06"E
C16	39.27'	25.00'	90°00'00"	25.00'	35.36'	S45°21'54"E
C17	67.87'	112.00'	34°43'11"	35.01'	66.84'	S23°42'58"W
C18	13.14'	112.00'	6°43'17"	6.58'	13.13'	S02°59'44"W