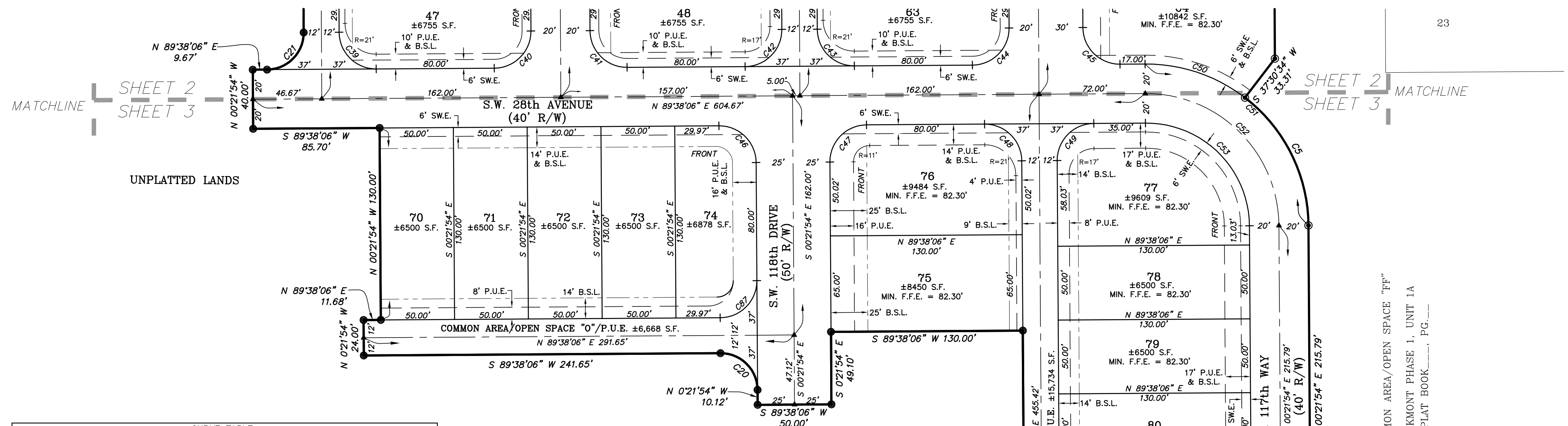


OAKMONT PHASE I, UNIT 1B A PLANNED DEVELOPMENT

SITUATED IN SECTION 13, TOWNSHIP 10 SOUTH, RANGE 18 EAST,
ALACHUA COUNTY, FLORIDA

Causeaux, Hewett, & Walpole, Inc.
Engineering • Surveying • Planning
132 NW 76th Drive, Gainesville, Florida 32607
Phone: (352) 331-1976 • Fax: (352) 331-2476 • www.chw-inc.com
LB-5075

PLAT BOOK _____, PAGE _____
SHEET THREE OF SEVEN



- LEGEND:**
- = PERMANENT REFERENCE MONUMENT - FOUND 5/8" STEEL ROD & CAP MARKED "PRM LB 5075"
 - ▲ = PERMANENT CONTROL POINT - NAIL AND DISK MARKED LB. 5075 (TO BE SET)
 - = PERMANENT REFERENCE MONUMENT - SET 5/8" STEEL ROD & CAP MARKED LB. 5075
 - = PERMANENT REFERENCE MONUMENT - FOUND 4" X 4" CONCRETE MONUMENT LB. 5075
 - S.F. = SQUARE FEET
 - R/W = RIGHT-OF-WAY
 - P.R.M. = PERMANENT REFERENCE MONUMENT
 - P.U.E. = PUBLIC UTILITIES EASEMENT
 - SW.E. = SIDEWALK EASEMENT
 - B.S.L. = BUILDING SETBACK LINE
 - CA = COMMON AREA
 - OS = OPEN SPACE
 - (R) = RADIAL LOT LINE
 - R = RADIUS
 - MIN. F.F.E. = MINIMUM FINISH FLOOR ELEVATION
 - PG = PAGE

CURVE	LENGTH	RADIUS	DELTA	TANGENT	CHORD	CHORD BEARING
C5	100.05'	110.00'	52°06'48"	53.79'	96.64'	S26°23'18"E
C6	153.65'	280.00'	31°26'26"	78.81'	151.73'	S16°05'07"E
C7	36.92'	25.00'	84°37'14"	22.76'	33.66'	S10°30'17"W
C8	249.35'	395.00'	36°10'08"	128.99'	245.23'	S34°43'50"W
C9	15.75'	455.00'	1°59'01"	7.88'	15.75'	N17°38'16"E
C10	36.92'	25.00'	84°37'14"	22.76'	33.66'	N23°40'51"W
C11	41.15'	25.00'	94°19'10"	26.96'	36.66'	S66°53'33"W
C12	18.23'	585.00'	1°47'07"	9.11'	18.23'	S18°30'24"W
C13	13.95'	609.00'	1°18'46"	6.98'	13.95'	N18°16'14"E
C14	44.48'	25.00'	101°55'52"	30.83'	38.84'	N32°02'19"W
C15	12.16'	280.00'	2°28'21"	6.08'	12.16'	N84°14'55"W
C16	37.80'	320.00'	6°46'03"	18.92'	37.78'	S82°06'34"E
C17	32.27'	25.00'	73°57'50"	18.83'	30.08'	N64°17'33"E
C18	25.21'	609.00'	2°22'20"	12.61'	25.21'	N28°29'48"E
C19	151.04'	288.00'	30°02'52"	77.30'	149.31'	N14°39'52"E
C20	39.27'	25.00'	90°00'00"	25.00'	35.36'	N45°21'54"W
C21	39.27'	25.00'	90°00'00"	25.00'	35.36'	N44°38'06"E
C39	39.27'	25.00'	90°00'00"	25.00'	35.36'	S45°21'54"E
C40	39.27'	25.00'	90°00'00"	25.00'	35.36'	N44°38'06"E
C41	39.27'	25.00'	90°00'00"	25.00'	35.36'	S45°21'54"E
C42	39.27'	25.00'	90°00'00"	25.00'	35.36'	N44°38'06"E
C43	39.27'	25.00'	90°00'00"	25.00'	35.36'	S45°21'54"E
C44	39.27'	25.00'	90°00'00"	25.00'	35.36'	N44°38'06"E
C45	39.27'	25.00'	90°00'00"	25.00'	35.36'	S45°21'54"E
C46	39.27'	25.00'	90°00'00"	25.00'	35.36'	N45°21'54"W
C47	39.27'	25.00'	90°00'00"	25.00'	35.36'	S44°38'06"W
C48	39.27'	25.00'	90°00'00"	25.00'	35.36'	N45°21'54"W
C49	39.27'	25.00'	90°00'00"	25.00'	35.36'	S44°38'06"W
C50	72.75'	110.00'	72°53'31"	37.75'	71.42'	N71°51'18"W
C51	172.79'	110.00'	90°00'00"	110.00'	155.56'	N45°21'54"W
C52	141.37'	90.00'	90°00'00"	90.00'	127.28'	N45°21'54"W
C53	109.96'	70.00'	90°00'00"	70.00'	98.99'	N45°21'54"W
C54	47.42'	320.00'	8°29'23"	23.75'	47.37'	S04°36'36"E
C55	51.39'	320.00'	9°12'04"	25.75'	51.33'	S13°27'20"E
C56	54.20'	320.00'	9°42'17"	27.17'	54.14'	S22°54'30"E
C57	22.59'	320.00'	4°32'41"	11.30'	22.59'	S29°47'00"E
C58	164.62'	300.00'	31°26'26"	84.44'	162.56'	S18°05'07"E
C59	175.60'	320.00'	31°26'26"	90.07'	173.40'	S16°05'07"E
C60	54.62'	425.00'	7°21'46"	27.35'	54.58'	S20°19'39"W
C61	213.67'	425.00'	28°48'22"	109.15'	211.43'	S38°24'43"W
C62	186.04'	455.00'	23°25'36"	94.34'	184.74'	S41°06'06"W
C63	46.05'	455.00'	5°47'54"	23.04'	46.03'	S49°54'57"W
C64	53.13'	455.00'	6°41'24"	26.59'	53.10'	S43°40'18"W
C65	51.36'	455.00'	6°28'03"	25.71'	51.33'	S37°05'35"W
C66	35.51'	455.00'	4°28'16"	17.76'	35.50'	S31°37'26"W
C67	36.92'	25.00'	84°37'14"	22.76'	33.66'	N71°41'55"E
C68	1.20'	320.00'	0°12'52"	0.60'	1.20'	N66°05'54"W
C69	41.37'	25.00'	94°49'24"	27.20'	36.81'	S18°47'38"E
C70	10.87'	585.00'	1°03'54"	5.44'	10.87'	S29°09'01"W
C71	61.81'	597.00'	1°55'56"	30.93'	61.78'	S28°43'00"W
C72	69.93'	320.00'	12°31'12"	35.10'	69.79'	N72°27'56"W
C73	38.75'	320.00'	6°56'18"	19.40'	38.73'	N69°40'29"W
C74	31.17'	320.00'	5°34'54"	15.60'	31.16'	N75°56'05"W
C75	61.90'	300.00'	11°49'17"	31.06'	61.79'	N79°34'57"W
C76	40.22'	300.00'	7°40'50"	20.14'	40.19'	N69°49'53"W
C77	81.72'	280.00'	16°43'22"	41.15'	81.43'	N43°58'33"W
C78	38.38'	280.00'	7°51'19"	19.22'	38.35'	N70°12'29"W
C79	43.34'	280.00'	8°52'08"	21.71'	43.30'	N78°34'10"W
C80	63.94'	597.00'	6°08'11"	32.00'	63.91'	S20°40'57"W
C81	20.05'	312.00'	3°40'57"	10.03'	20.05'	N27°50'29"E
C82	50.11'	312.00'	9°12'05"	25.11'	50.05'	N21°23'58"E
C83	51.16'	312.00'	9°23'40"	25.64'	51.10'	N12°06'05"E
C84	42.31'	312.00'	7°46'10"	21.19'	42.28'	N03°31'11"E
C85	157.33'	300.00'	30°02'52"	80.52'	155.63'	N14°39'32"E
C86	163.62'	312.00'	30°02'52"	83.74'	161.75'	N14°39'32"E
C87	39.27'	25.00'	90°00'00"	25.00'	35.36'	N44°38'06"E

- SURVEYOR'S NOTES:**
- ALL WHOLE FOOT DIMENSIONS ARE INTENDED TO BE ACCURATE TO THE HUNDREDTH OF A FOOT.
 - ALL LOT LINES ARE NON-RADIAL UNLESS OTHERWISE SHOWN.
 - THIS PLAT IS SEVEN SHEETS TOTAL. EACH SHEET IS NOT COMPLETE WITHOUT THE OTHERS. SEE SHEET ONE FOR ADDITIONAL SURVEYOR'S NOTES. SEE SHEETS TWO THROUGH SEVEN FOR DETAILED INFORMATION.
 - PRIMARY AND ACCESSORY BUILDING SETBACKS ARE AS FOLLOWS: (UNLESS SHOWN OTHERWISE)
 - FRONT - 5'
 - SIDE (INTERIOR) - 5'
 - SIDE (STREET) - 5'
 - REAR - 10'

Tech: garrinh Plot Date: Sep 12, 2013 10:14am Filename: R:\2013\13-0185\Oakmont Phase I Unit 1B - PLAT.dwg