



CR 337 Resurfacing Levy County Line to SW 30th Avenue

PRESENTATION
TO THE ALACHUA COUNTY BOARD OF COUNTY COMMISSIONERS
JANUARY, 24 2012



PRESENTATION OUTLINE

- Purpose
- 90% Plans
- Costs
- Recommendation

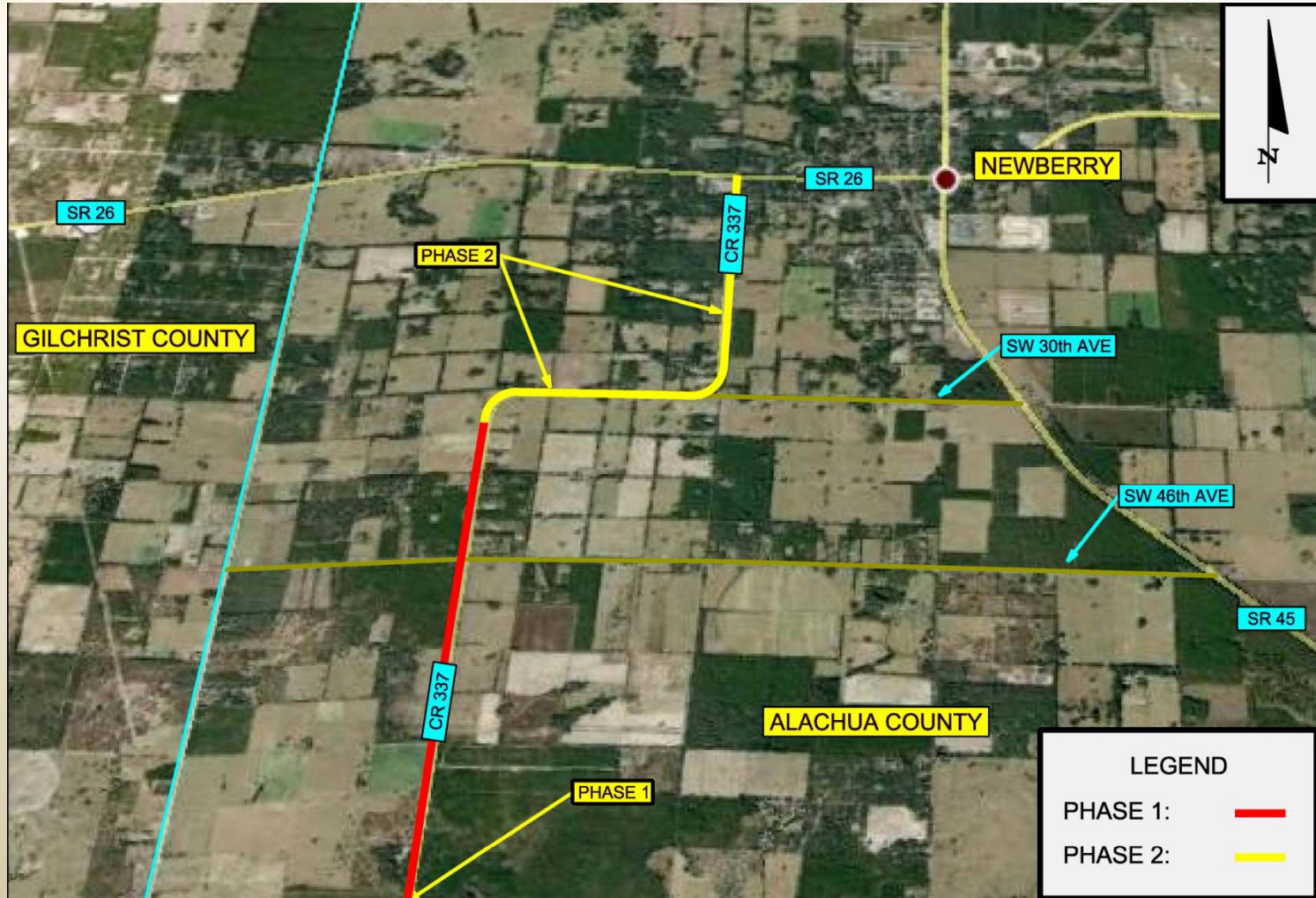


RECOMMENDATIONS

Approve 90% Design plans, authorize staff to proceed to Final Construction Plans of Widening and Resurfacing of CR 337



PROJECT MAP



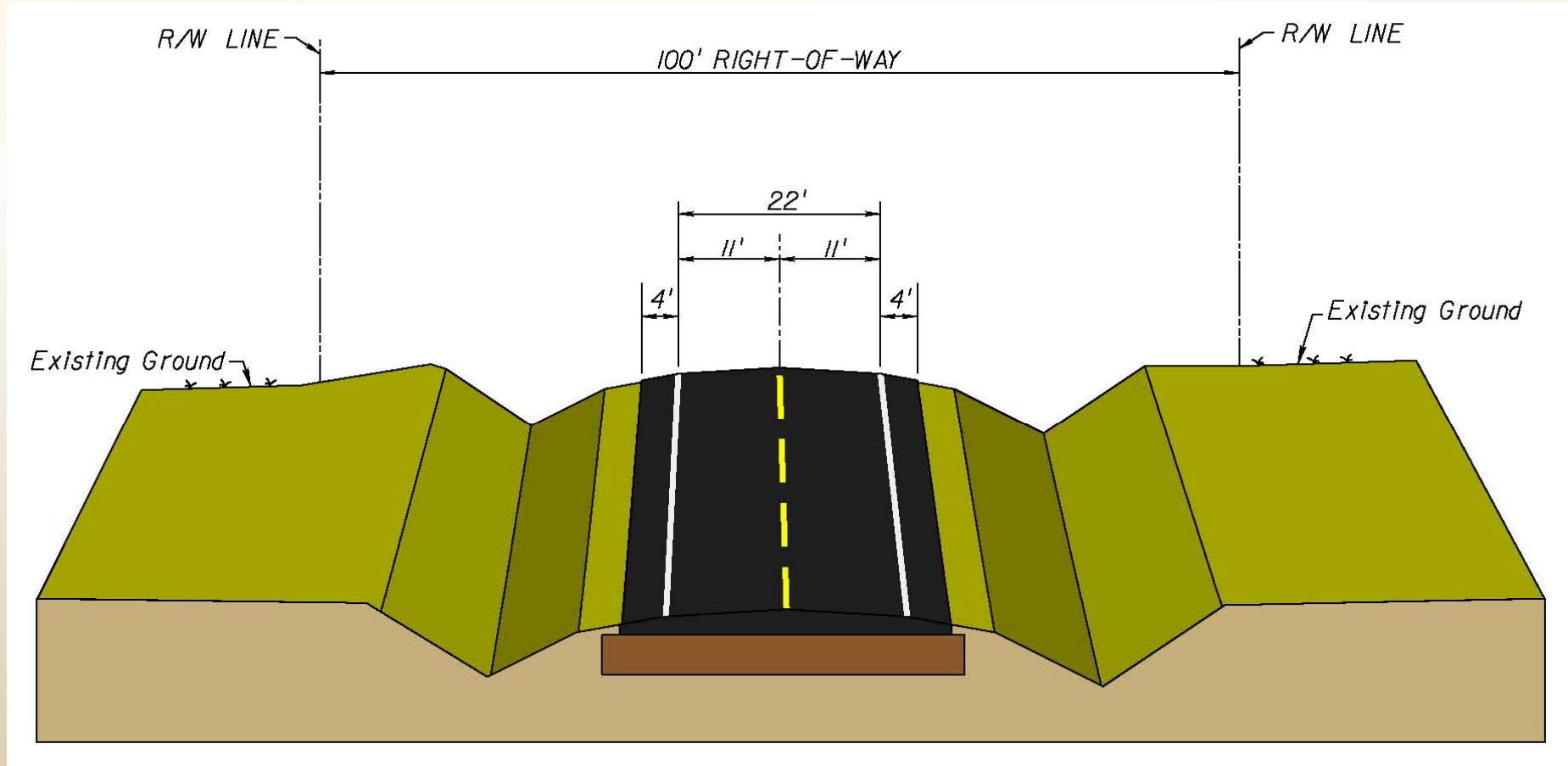


PROJECT TIME LINE

- Notice to Proceed: February 4, 2010
- 30% Plans Approved by BCC: July 13, 2010
- 60% Plans Approved by BCC: Oct 26, 2010
- **90% Plans Approved by BCC: January, 2012**
- Final Plans Submittal: February, 2012
- Ready for Bid: TBD
- Begin Construction: TBD



CR 337 PROPOSED TYPICAL SECTION





COST

- Construction Estimate: \$ 3,640,000
 - 2 – 11-foot Lanes
 - 2 – 4-foot paved shoulders
 - Stormwater enhancements
- Total: \$ 3,640,000



RECOMMENDATIONS

Approve 90% Design plans, authorize staff to proceed to Final Construction Plans of Widening and Resurfacing of CR 337



QUESTIONS?