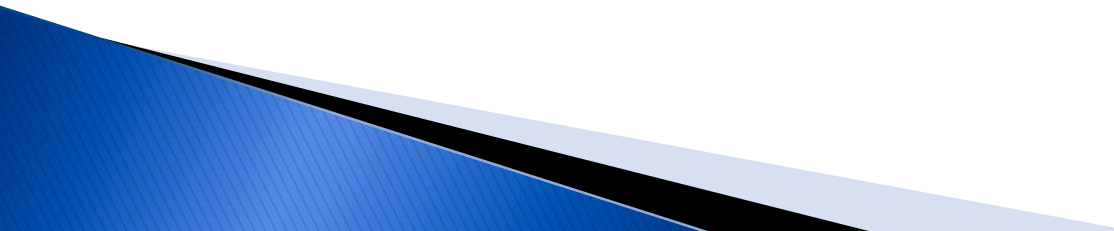




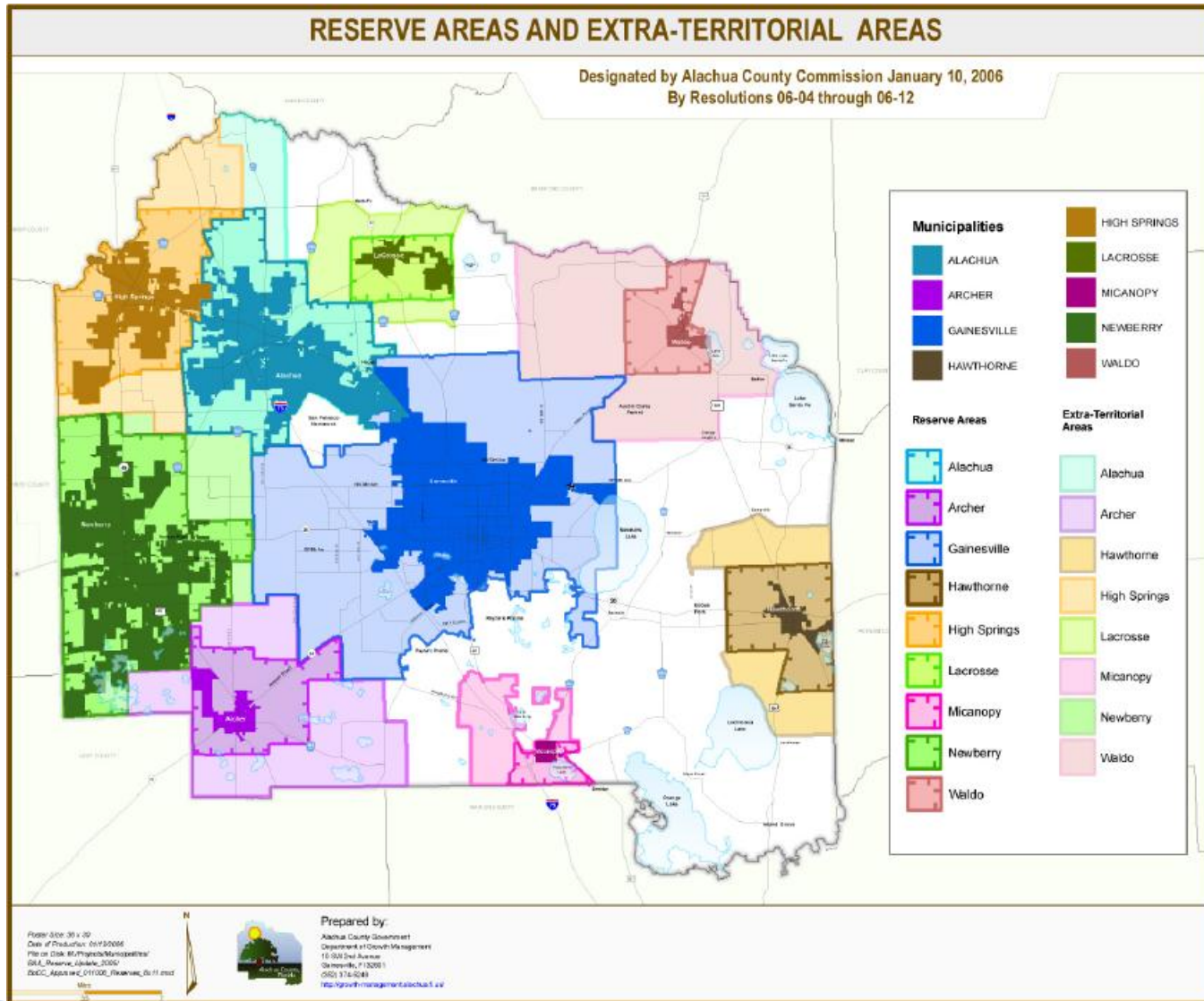
Request by City of Gainesville for Amendment of Reserve Area Under the Boundary Adjustment Act

**BOARD OF COUNTY COMMISSIONERS PUBLIC HEARING
August 9, 2011**

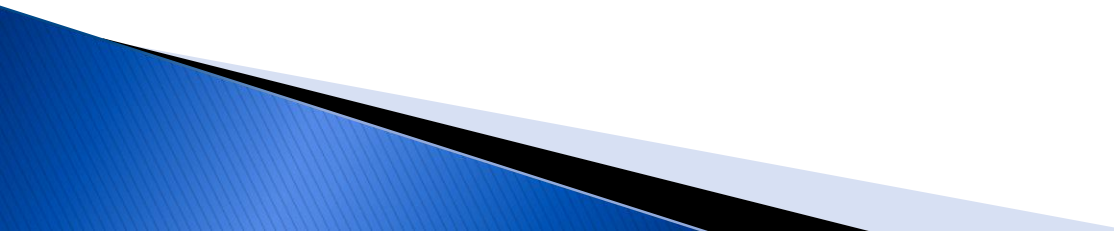
ALACHUA COUNTY BOUNDARY ADJUSTMENT ACT (BAA)

- Special Act adopted by the State in 1990 governing annexation in Alachua County
 - Requires review of Reserve Areas (i.e. the areas reserved exclusively for annexation by each municipality) and Statements of Services by the County and each municipality every 5 years
 - Last review and update completed in March 2006
- 


RESERVE AREAS ADOPTED IN 2006



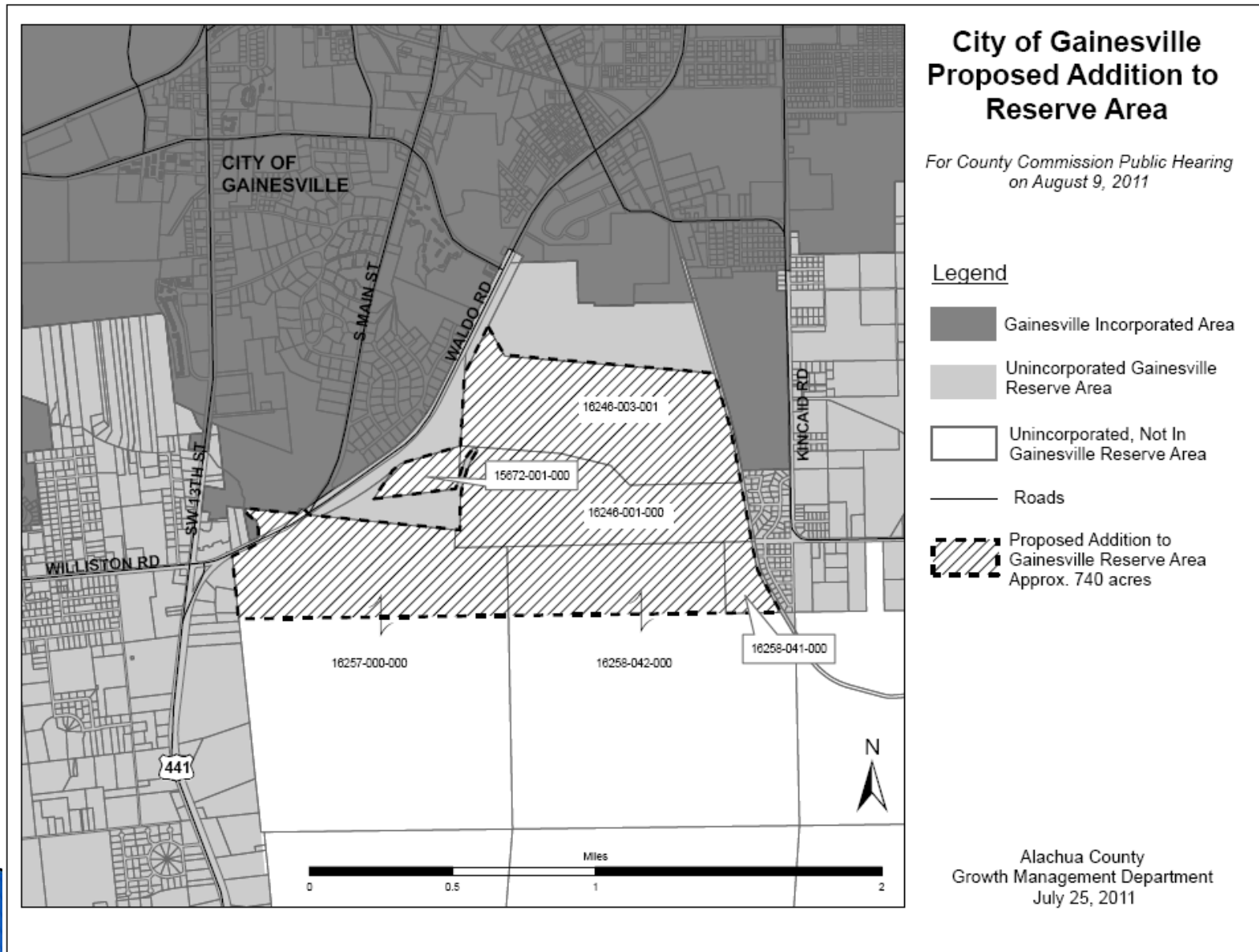
2011 RESERVE AREA REVIEW PROCESS

- Manager sent letters to each municipality in January asking if there was interest in revising their Reserve Areas, or maintaining them as adopted in 2006.
 - County received written responses from municipalities
 - Eight of the municipalities indicated no desire to make changes to their Reserve Areas
 - City of Gainesville indicated desire to make changes to its Reserve Area and Statement of Services; on April 21, the City Commission approved an initial proposal to add approximately 1,600 acres to its reserve area
- 

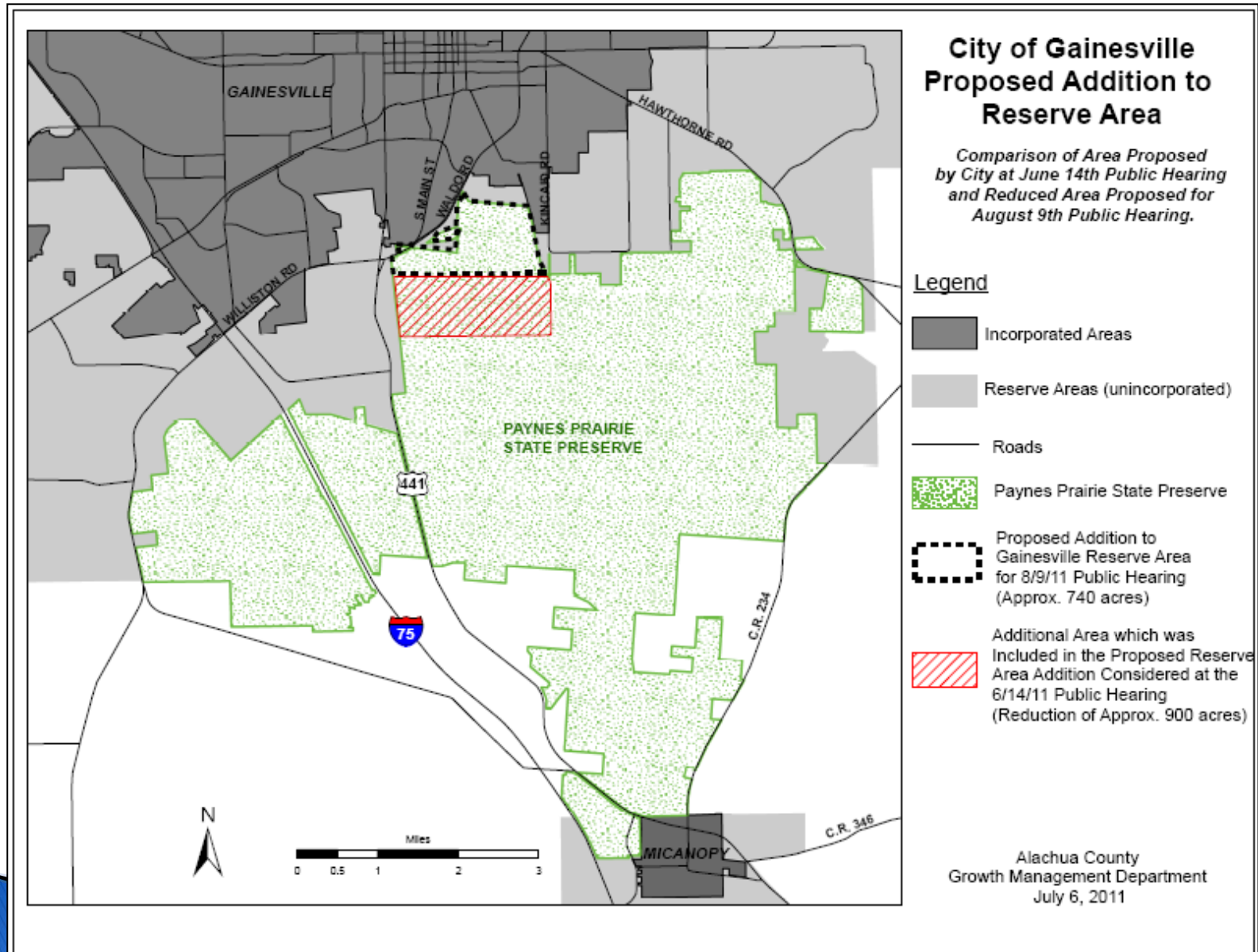
UPDATE OF GAINESVILLE RESERVE AREA

- April 28, 2011: County was notified by letter of the City's proposed addition to its Reserve Area and Statement of City Services
 - June 14, 2011: County Commission conducted the required public hearing and denied the City's proposed addition to its Reserve Area
 - June 28, 2011: County Commission accepted GRU's request for reconsideration of the Gainesville Reserve Area change; BoCC indicated that the reconsidered area should correspond more closely to GRU's Sheetflow project area.
- 

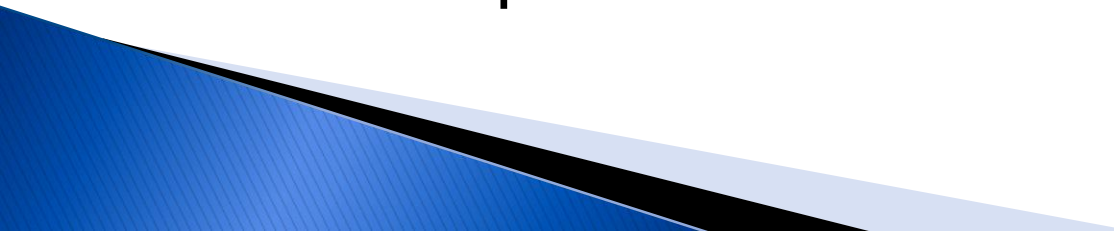
REVISED PROPOSAL TO MODIFY RESERVE AREA



REDUCTION IN PROPOSED RESERVE AREA CHANGE



CRITERIA FOR RESERVE AREAS

- Section 225.06 of BAA provides that Reserve areas shall comply with the following criteria:
 - (a) Be adjacent to the municipality;
 - (b) Be “urban in character” or likely to become so within the next ten years;
 - (c) Be areas in which population growth should be directed to promote efficient delivery of urban services as detailed in the BAA and “encourage more concentrated urban development”.
- 

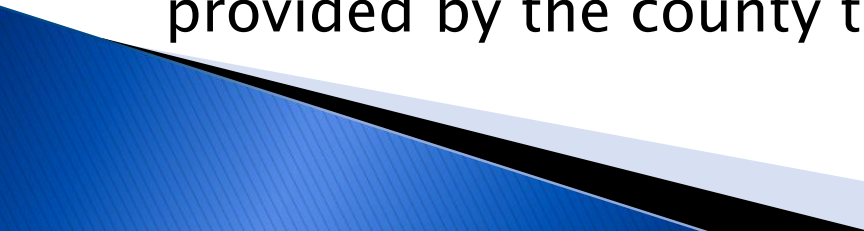
CRITERIA FOR RESERVE AREAS

Section 225.06 of BAA provides the following definition of “urban in character”:

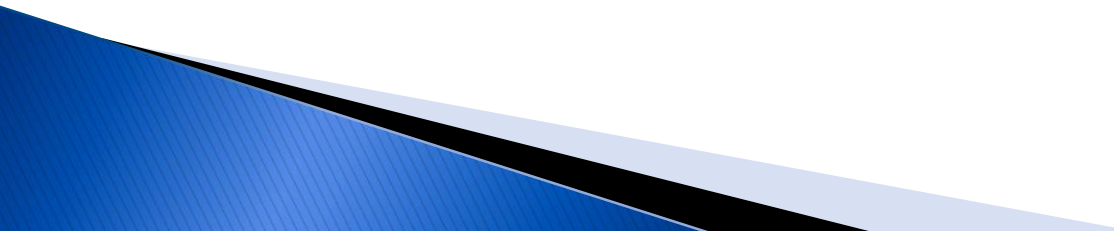
Urban in character means an area used for residential, urban recreational or conservation parklands, commercial, industrial, institutional, or governmental purposes or an area undergoing development for any of these purposes, including any parcels of land retained in their natural state or kept free of development as greenbelt areas.

CRITERIA FOR RESERVE AREAS

Section 225.06 provides that Reserve Areas shall not:

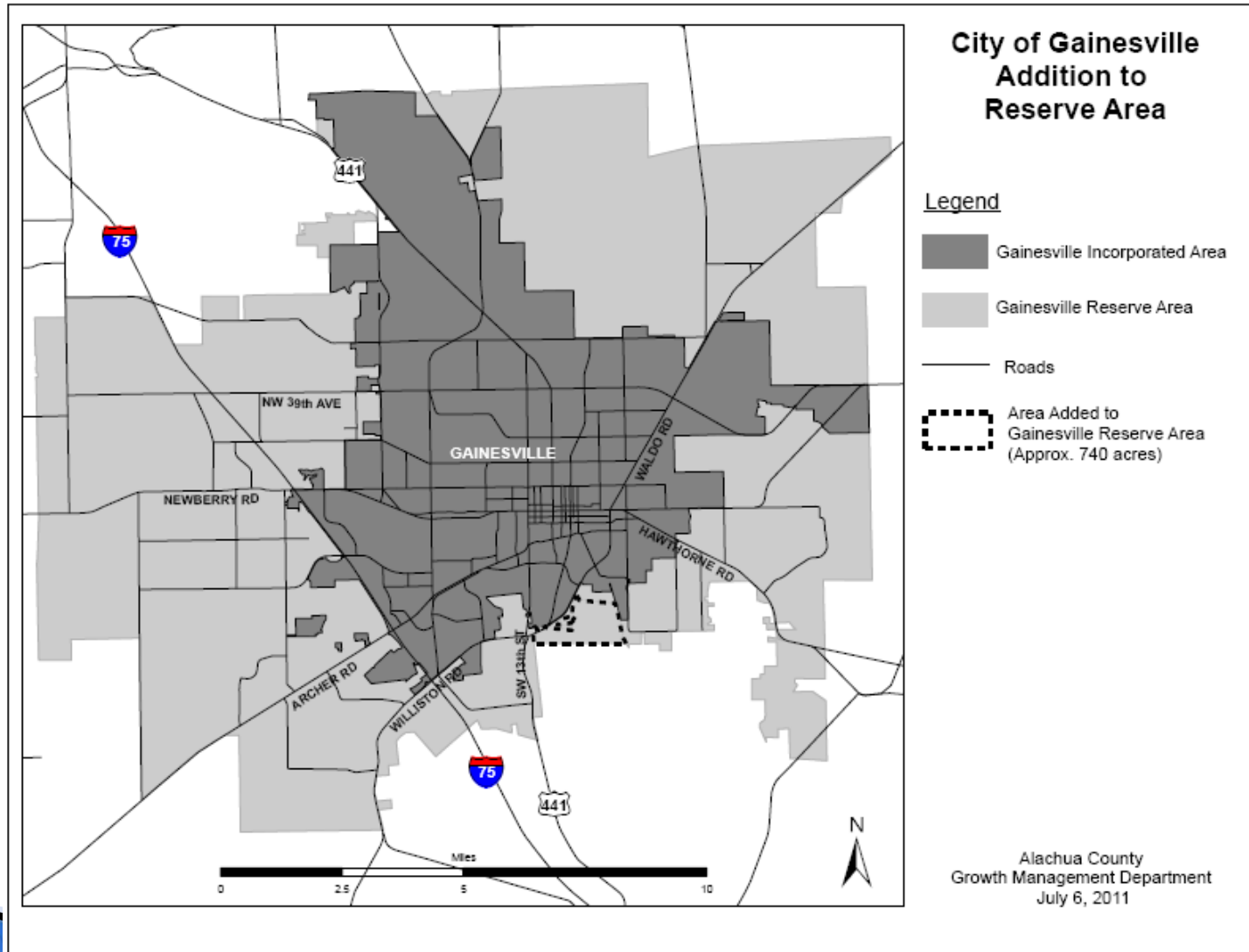
- a) Contain areas outside the county, within the limits of another municipality or another municipality's reserve area;
 - b) contain areas which could be provided urban services more efficiently by the county or other municipality;
 - c) contain areas which cannot reasonably be foreseen to be provided with urban services provided by the municipality within the next 10 years; or
 - d) Contain areas which the municipality cannot reasonably have the capacity or capital facilities within the next 10 years to provide, at a minimum, the level of services provided by the county to the reserve areas.
- 

RESOLUTION FOR ADOPTION

- Exhibit A – Map of Revised Reserve Area for City of Gainesville
 - Exhibit B – Statement of County Services for Gainesville Reserve Area
 - Reserve Areas for other 8 municipalities, as adopted in 2006, shall remain in effect and be reviewed in 5 years
- 

MAP OF UPDATED RESERVE AREA

EXHIBIT A OF RESOLUTION FOR ADOPTION



RECOMMENDATION

- Adopt Resolution designating an updated Reserve Area and Statement of County Services for the Gainesville Reserve Area.
 - Authorize transmittal of a letter from the County Manager to the City of Gainesville and other municipalities, notifying them of the Board's decision.
- 