

1
2 ALACHUA COUNTY
3 BOARD OF COUNTY COMMISSIONERS
4

5 **ORDINANCE NO. 2011-**
6
7

8 **AN ORDINANCE OF THE BOARD OF COUNTY COMMISSIONERS OF**
9 **ALACHUA COUNTY, FLORIDA, AMENDING THE COMMISSIONER**
10 **DISTRICTS OF ALACHUA COUNTY, FLORIDA, PURSUANT TO THE**
11 **FLORIDA CONSTITUTION (ARTICLE VIII, SECTION 1, PARAGRAPH**
12 **(E); PROVIDING FOR FINDINGS; PROVIDING FOR A TITLE;**
13 **PROVIDING FOR PURPOSE AND INTENT; PROVIDING REVISED**
14 **COMMISSIONER DISTRICTS BASED ON 2010 CENSUS; PROVIDING**
15 **FOR PUBLICATION OF THE REVISED DISTRICTS IN ACCORDANCE**
16 **WITH SECTION 124.02(1) OF THE FLORIDA STATUTES; PROVIDING**
17 **FOR SEVERABILITY; PROVIDING FOR FILING OF COPIES AND**
18 **FURNISHING OF MINUTES; PROVIDING FOR INCLUSION IN THE**
19 **CODE; PROVIDING FOR AN EFFECTIVE DATE.**
20
21

22 WHEREAS, the United States Census Bureau issued county level data for redistricting
23 on March 17, 2011; and,

24 WHEREAS, the 2010 federal decennial consensus data indicates that Alachua County
25 has sustained population growth which requires redistricting of commissioners' districts; and,

26 WHEREAS, Article VIII, Section 1, Paragraph (e) of the Florida Constitution requires
27 the Board of County Commissioners to divide the County into commissioner districts of
28 contiguous territory as nearly equal in population as practicable following each decennial census;
29 and,

30 WHEREAS, Subsection 124.01(3), Florida Statutes, provides that changes in
31 commissioner districts be made only in odd-numbered years; and,

32 WHEREAS, on _____, the Board of County Commissioners conducted a
33 public hearing and considered alternative redistricting proposals including the recommendation
34 attached hereto as composite Exhibit A which contains a map that depicts five (5)

1 commissioner districts and lists the precincts contained in each district, and Exhibit “B,” the
2 legal descriptions for each precinct; and,

3 WHEREAS, the recommended redistricting proposal meets Florida Constitutional
4 requirements by dividing the county into five (5) commissioner districts of contiguous territory
5 as nearly equal in population as practicable (each district having less than five per cent (5%)
6 deviation from exactly equal population numbers) and, as specified in Article II, Section 2.2 of
7 the Alachua County Home Rule Charter, divides the County into five (5) commissioner districts,
8 and also meets locally desired guidelines by: creating generally pie-shaped districts in order to
9 include both urban and rural areas within each district; not splitting voting precincts between
10 districts in order to ensure more efficient voting administration, and simplifying future
11 commissioner elections by delineating district boundaries so that incumbent commissioners
12 remain in separate districts.

13 BE IT ORDAINED BY THE BOARD OF COUNTY COMMISSIONERS OF
14 ALACHUA COUNTY, FLORIDA:

15 SECTION 1. Sec. 21.24 Commissioner Districts of the Alachua County Code is
16 amended to read:

17 **Sec. 21.24. Commissioner Districts**

18 (a) Findings. The Board of County Commissioners of Alachua County, Florida, finds
19 that the map entitled "Commissioner Districts of Alachua County, Florida" based upon the [2000](#)
20 [2010](#) Census of Population and attached hereto as Exhibit A, is consistent with redistricting
21 requirements of Article VIII, Section 1, paragraph (e) of the Florida Constitution, and pertinent
22 State Statutes.

23
24 (b) Title. This Ordinance shall be titled "Commissioner Districts of Alachua County,
25 Florida."

26
27 (c) Purpose and Intent. This Ordinance is enacted to carry out the purpose and intent
28 of, and exercise the authority set out in, the Florida Constitution, Article VIII, Section 1,
29 Paragraph (e).
30

1 (d) Revised Commissioner Districts based on [2000-2010](#) Census. The Commissioner
2 Districts of Alachua County, Florida, shall be those shown on the map attached hereto and
3 incorporated herein by reference as [composite](#) Exhibit A and comprised of the contiguous
4 territories incorporating those voting precincts listed on ~~said-composite~~ Exhibit A, and described
5 by metes and bounds legal descriptions in Exhibit B ~~attached hereto and incorporated herein~~.
6

7 (e) Severability. It is the declared intent of County Commissioners that if any
8 section, subsection, sentence, clause, phrase or provision of this ordinance is held invalid or
9 unconstitutional by a court of competent jurisdiction, such invalidity or unconstitutionality shall
10 not be so construed as to render invalid or unconstitutional the remaining provisions of this
11 ordinance.
12

13 (f) Publication of Revised Districts. The Board of County Commissioners in
14 accordance with Section 124.02(1), Florida Statutes, shall cause an accurate description of the
15 boundaries of the Commissioners Districts, as changed, to be entered upon its minutes and a
16 certified copy thereof to be published once each week for two consecutive weeks. Proof of such
17 publication shall be entered upon the minutes of the Board of County Commissioners.
18

19 (g) Copy on File; Furnishing of Minutes. A certified copy of this Ordinance with the
20 attached Exhibits, and the corresponding minutes shall be on file with the Clerk of the Board of
21 County Commissioners and also furnished to the Supervisor of Elections. In accordance with
22 Section 124.03, Florida Statutes, the Clerk of the Commission shall furnish the Florida
23 Department of State with a certified copy of its minutes reflecting the description of the
24 boundaries of the districts as changed.
25

26 SECTION 2. Repeal of Ordinance 01-27. This ordinance shall repeal and replace
27 Ordinance 01-27, which was adopted on October 23, 2001.

28 SECTION 3. Inclusion in the Code. It is the intention of the Board of County
29 Commissioners of Alachua County, Florida, and it is hereby provided that the provisions of this
30 ordinance shall become and be made a part of the Alachua County Code of Alachua County
31 Florida: that the sections of this ordinance may be renumbered or relettered to accomplish such
32 intention; and that the "ordinance" may be changed to "section", "article", or other appropriate
33 designation.

34 SECTION 4. Effective Date. A certified copy of this ordinance shall be filed with the
35 Department of State by the Clerk of the Board of County Commissioners within ten (10) days

1 after enactment by the Board of County Commissioners and shall be effective upon filing with
2 the Department of State.

3 DULY ADOPTED in regular session, this ____ day of _____, 2011.

4 BOARD OF COUNTY COMMISSIONERS OF
5 ALACHUA COUNTY, FLORIDA

6
7 ATTEST:

8 By: _____
9 Lee Pinkoson, Chair

10 _____
11 J. K. Irby, Clerk

12 APPROVED AS TO FORM

13
14 _____
15 County Attorney

16 (SEAL)

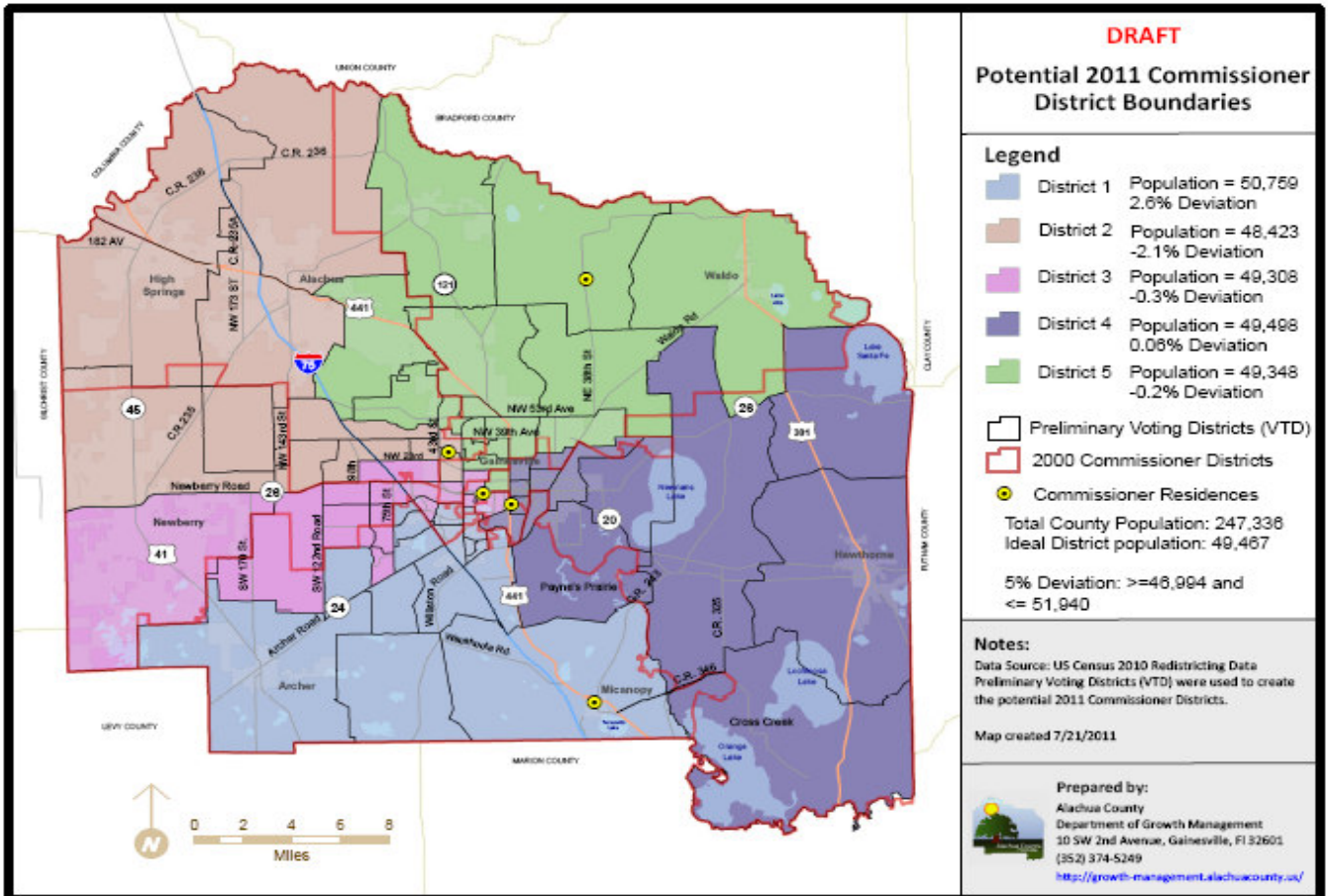
17
18 APPROVED AS TO CORRECTNESS

19
20 _____
21 Growth Management Department

22
23
24
25
26
27
28
29
30
31
32
33
34
35
36
37
38
39
40
41
42
43

Exhibit A

1
2



3