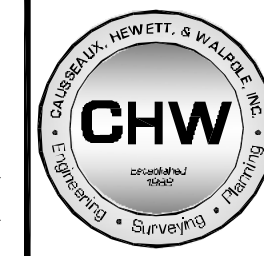


NOTE:  
FLOOD ZONE DESIGNATIONS SHOWN HEREON ARE BASED ON A CONDITIONAL LETTER OF MAP REVISION BASED ON FILL (CLOMR-F), RECEIVED FROM THE FEDERAL EMERGENCY MANAGEMENT AGENCY, CASE NUMBER 07-04-0088C, DATED JANUARY 11, 2007.

# OAKMONT PHASE I, UNIT 1A A PLANNED DEVELOPMENT

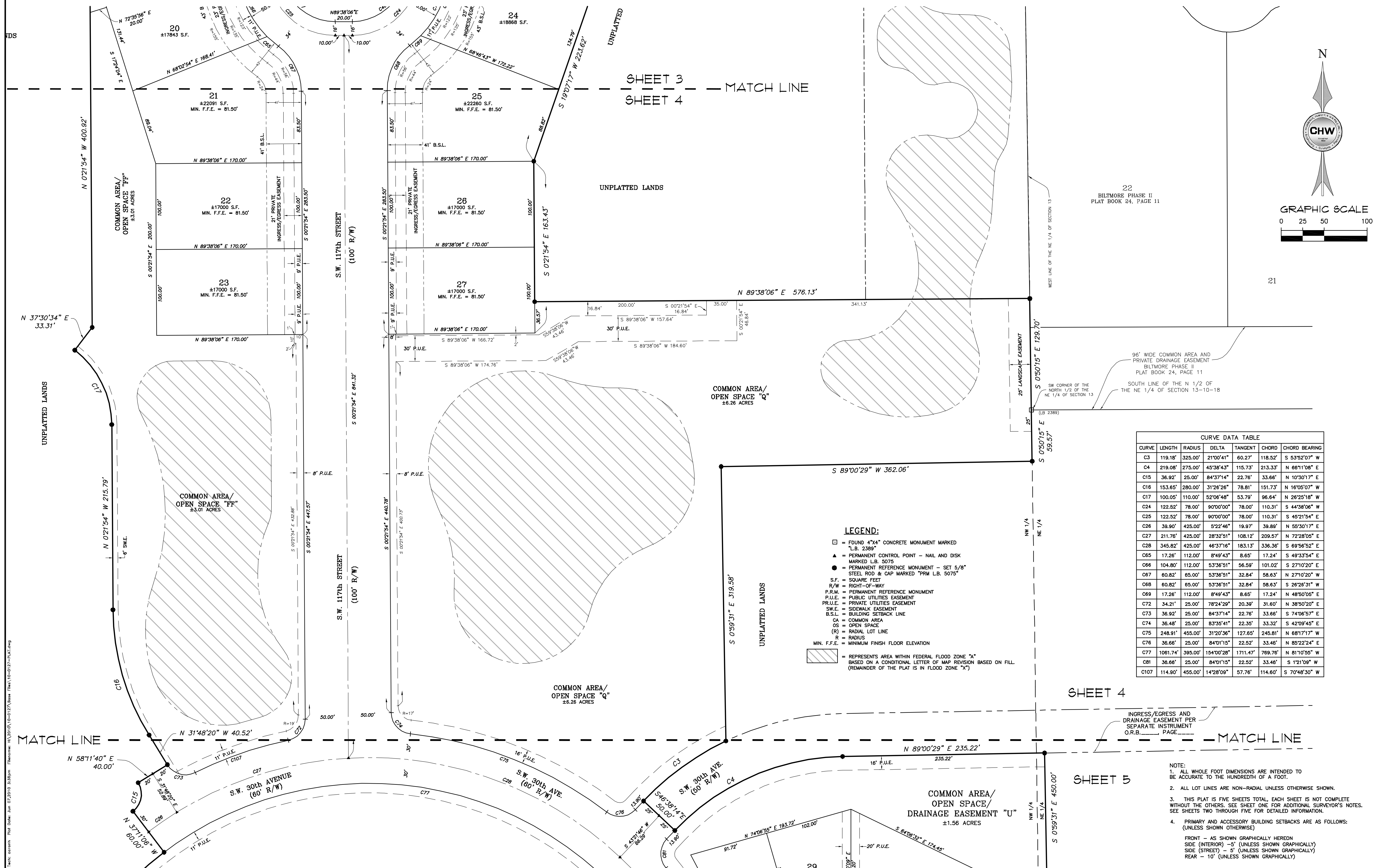
SITUATED IN SECTION 13, TOWNSHIP 10 SOUTH, RANGE 18 EAST,  
ALACHUA COUNTY, FLORIDA

A.H.H. 10-0127  
04/11/2000



Causseaux, Hewett, & Walpole, Inc.  
Engineering • Surveying • Planning  
6011 NW 1st Place, Gainesville, Florida 32607  
Phone: (352) 331-1976 • Fax: (352) 331-2476 • www.chw-inc.com  
LB-5075

PLAT BOOK \_\_\_\_\_, PAGE \_\_\_\_\_  
SHEET FOUR OF FIVE



CURVE DATA TABLE

CURVE	LENGTH	RADIUS	DELTA	TANGENT	CHORD	CHORD BEARING
C3	119.18'	325.00'	21°00'41"	60.27'	118.52'	S 53°52'07" W
C4	219.08'	275.00'	45°38'43"	115.73'	213.33'	N 66°11'08" E
C15	36.92'	25.00'	84°37'14"	22.78'	33.66'	N 10°30'17" E
C16	153.65'	280.00'	31°28'26"	78.81'	151.73'	N 16°05'07" W
C17	100.05'	110.00'	52°08'48"	53.79'	96.64'	N 26°25'18" W
C24	122.62'	78.00'	90°00'00"	78.00'	110.31'	S 44°38'06" E
C25	122.52'	78.00'	90°00'00"	78.00'	110.31'	S 45°21'54" E
C26	39.90'	425.00'	5°22'46"	19.97'	39.89'	N 55°30'17" E
C27	211.76'	425.00'	28°32'51"	108.12'	209.57'	N 72°28'05" E
C28	345.82'	425.00'	46°37'16"	183.13'	336.38'	S 69°56'52" E
C65	17.26'	112.00'	8°49'43"	8.65'	17.24'	S 49°33'54" E
C66	104.80'	112.00'	53°38'51"	56.59'	101.02'	S 27°10'20" E
C67	60.82'	65.00'	53°38'51"	32.84'	58.63'	N 27°10'20" W
C68	60.82'	65.00'	53°38'51"	32.84'	58.63'	S 26°28'51" W
C69	17.26'	112.00'	8°49'43"	8.65'	17.24'	N 48°50'05" E
C72	34.21'	25.00'	78°24'29"	20.39'	31.60'	N 38°50'20" E
C73	36.92'	25.00'	84°37'14"	22.78'	33.66'	S 74°08'57" E
C74	36.48'	25.00'	83°35'41"	22.35'	33.32'	S 42°09'45" E
C75	248.91'	455.00'	31°20'36"	127.65'	245.81'	N 68°17'17" W
C76	36.66'	25.00'	84°01'15"	22.52'	33.46'	N 85°22'24" E
C77	1061.74'	395.00'	154°00'28"	1711.47'	769.76'	N 81°09'55" W
C81	36.66'	25.00'	84°01'15"	22.52'	33.46'	S 1°21'09" W
C107	114.90'	455.00'	14°28'09"	57.76'	114.60'	S 70°48'30" W

**LEGEND:**

- = FOUND 4"x4" CONCRETE MONUMENT MARKED "L.B. 2389"
- ▲ = PERMANENT CONTROL POINT - NAIL AND DISK MARKED L.B. 5075
- = PERMANENT REFERENCE MONUMENT - SET 5/8" STEEL ROD & CAP MARKED "PRM L.B. 5075"
- S.F. = SQUARE FEET
- R/W = RIGHT-OF-WAY
- P.R.M. = PERMANENT REFERENCE MONUMENT
- P.U.E. = PUBLIC UTILITIES EASEMENT
- PR.U.E. = PRIVATE UTILITIES EASEMENT
- SW.E. = SIDEWALK EASEMENT
- B.S.L. = BUILDING SETBACK LINE
- CA = COMMON AREA
- CS = OPEN SPACE
- (R) = RADIAL LOT LINE
- R = RADIUS
- MIN. F.F.E. = MINIMUM FINISH FLOOR ELEVATION
- [Hatched Area] = REPRESENTS AREA WITHIN FEDERAL FLOOD ZONE "A" BASED ON A CONDITIONAL LETTER OF MAP REVISION BASED ON FILL (REMAINDER OF THE PLAT IS IN FLOOD ZONE "X")

NOTE:  
1. ALL WHOLE FOOT DIMENSIONS ARE INTENDED TO BE ACCURATE TO THE HUNDREDTH OF A FOOT.  
2. ALL LOT LINES ARE NON-RADIAL UNLESS OTHERWISE SHOWN.  
3. THIS PLAT IS FIVE SHEETS TOTAL, EACH SHEET IS NOT COMPLETE WITHOUT THE OTHERS. SEE SHEET ONE FOR ADDITIONAL SURVEYOR'S NOTES. SEE SHEETS TWO THROUGH FIVE FOR DETAILED INFORMATION.  
4. PRIMARY AND ACCESSORY BUILDING SETBACKS ARE AS FOLLOWS: (UNLESS SHOWN OTHERWISE)  
FRONT - AS SHOWN GRAPHICALLY HEREON  
SIDE (INTERIOR) - 5' (UNLESS SHOWN GRAPHICALLY)  
SIDE (STREET) - 5' (UNLESS SHOWN GRAPHICALLY)  
REAR - 10' (UNLESS SHOWN GRAPHICALLY)