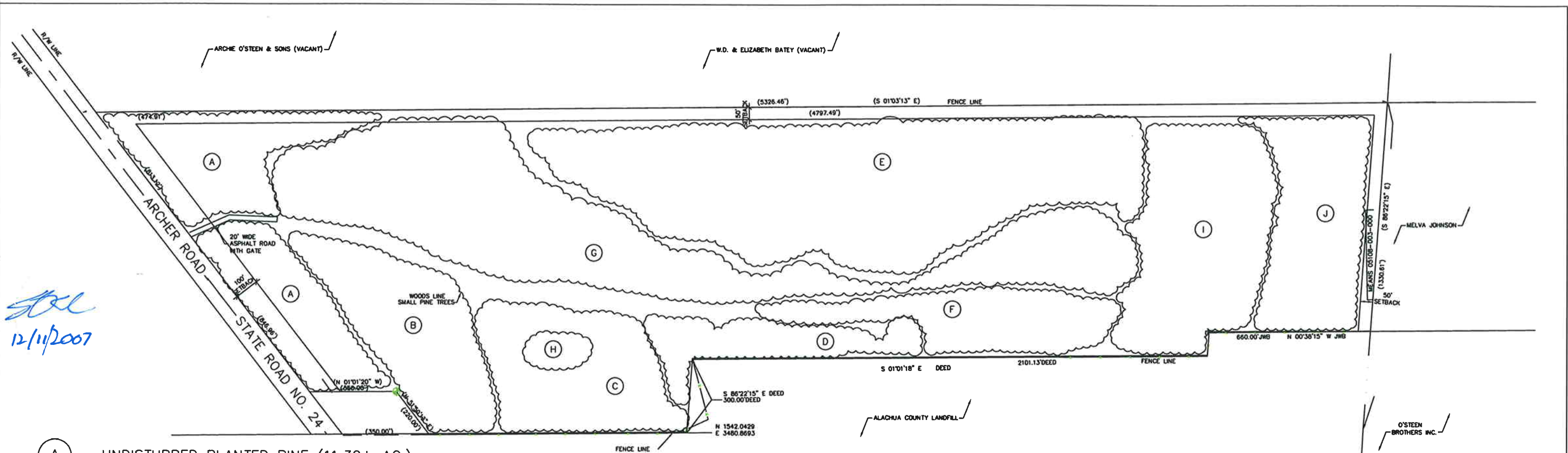


SCC
12/11/2007



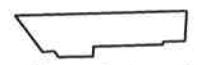
- (A) - UNDISTURBED PLANTED PINE (11.30± AC.)
- (B) - CLOSED C&D - PLANTED PINE (7.70± AC.)
- (C) - CLOSED C&D (8.10± AC.) - TO BE PLANTED IN PINE TREES
- (D) - CLEAN/LAND CLEARING DEBRIS UNDER CAPPING (3.90± AC.)
- (E) - COMPLETED BORROW AREA DESIGNATED FOR CLEAN/LAND CLEARING DEBRIS DISPOSAL 10/2007 TO 05/2012 (25.00± AC.)
- (F) - CLEAN/LAND CLEARING DEBRIS UNDER CAPPING TO BE PLANTED IN PINE TREES (5.70± AC.)
- (G) - DESIGNATED FOR CLEAN/LAND CLEARING DEBRIS DISPOSAL 10/2007 TO 05/2012 (22.80± AC.)
- (H) - DESIGNATED MILLED ASPHALT STOCKPILE
- (I) - ACTIVE BORROW AREA (10.90± AC.)
- (J) - DESIGNATED FOR BORROW 10/2007 TO 05/2012 (7.70± AC.)

V.E. Whitehurst & Sons, Inc.
Archer Excavation and Fill Operation

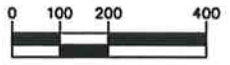
Proposed Site Plan
for Special Use Permit

Includes:
- Property boundaries and dimensions
- Proposed excavation and fill areas


Notes:
- No buildings or structures are proposed



Property Boundaries



Scale: 1 inch = 400 feet
[on 11" x 17" paper]



NORTH

KOGLER & ASSOCIATES
DATE: November 6, 2007
DRAWN BY: SCC
FILENAME: newsurvey.dwg